

Update Troopers Investigating Fatal Motor Vehicle Crash with Bicyclist-Laurel



Presented by the Director of Public Information Sergeant Richard D. Bratz

Laurel, DE- The Delaware State Police Collision Reconstruction Unit is currently investigating a fatal crash of a bicyclist that occurred this morning east of Laurel.

The preliminary investigation has determined that the crash occurred at approximately 7:28 a.m. this morning, Wednesday, June 14, 2017, as a 2001 Freightliner 6-wheel dump truck operated by Paul J. Fisher, 57 of Delmar, was traveling northbound on Whaley's Road (CR 62) just south of Wooten Road (CR 72). The bicyclist, 59 year old male of Laurel, was operating a mountain style bicycle northbound on Whaley's Road

just ahead of the dump truck. The operator of the truck failed to perceive the cyclist and struck the rear of the bicycle with the right front bumper. The dump truck came to a controlled stop just north of the collision.

The bicyclist, who was not wearing a bicycle helmet, was pronounced deceased at the scene. His name is being withheld pending the notification of next of kin.

Paul J. Fisher Jr., who was properly seat belted, was uninjured in this collision.

The investigation by the Collision Reconstruction Unit regarding the causation of the crash is ongoing. Charges have not been filed at this time. Speed and intoxication are not considered factors.

Both Wooten Road and Whaley's Road were closed in the area of the crash for approximately three hours as the crash was investigated and cleared.

The Collision Reconstruction Unit is continuing their investigation into this incident. If anyone may have witnessed this crash or has any knowledge of the crash they are asked to contact Sergeant T. Mendez of the Collision Reconstruction Unit at 302-703-3269. Information may also be provided by calling [Delaware Crime Stoppers](#) at 1-800-TIP-3333, via the internet at www.delaware.crimestoppersweb.com, or by sending an anonymous tip by text to 274637 (CRIMES) using the keyword "DSP."

If you or someone you know is a victim or witness of crime or have lost a loved one to a sudden death and are in need of assistance, the Delaware State Police Victim Services Unit/Delaware Victim Center is available to offer you support and resources 24 hours a day through a toll free hotline 1800 VICTIM-1. (1800 842-8461). You may also email the unit Director at debra.reed@delaware.gov.

You can follow the Delaware State Police by clicking on:

[Facebook](#)

[Twitter](#)

[Nextdoor](#)

Please tell us how we're doing via our [Citizen Satisfaction Survey](#).

Released: 061417 1551

-End-

Troopers Investigating Fatal Motor Vehicle Crash with Bicyclist-Laurel

Presented by the Director of Public Information Sergeant Richard D. Bratz

Laurel, DE- The Delaware State Police Collision Reconstruction Unit is currently investigating a fatal motor vehicle crash that occurred this morning.

The initial investigation has determined that the crash occurred at approximately 7:30 a.m. this morning, Wednesday, June 14, 2017, on Whaley's Road south of Wooten Road east of Laurel, and involves a six wheel dump truck and a bicyclist. As a result of the crash one person has been pronounced dead.

Both Wooten Road and Whaley's Road is currently closed in the area of the crash. Commuters are asked to use caution and find alternate routes of travel.

The investigation into this crash by the Delaware State Police is in its early stages. More information will be released at the conclusion of the investigation.

Released: 061417 1001

-End-

Troopers Investigating Fatal Motor Vehicle Crash with Bicyclist-Laurel



Presented by the Director of Public Information Sergeant Richard D. Bratz

Laurel, DE- The Delaware State Police Collision Reconstruction Unit is currently investigating a fatal motor vehicle crash that occurred this morning.

The initial investigation has determined that the crash occurred at approximately 7:30 a.m. this morning, Wednesday,

June 14, 2017, on Waleys Road south of Wooten Road east of Laurel, and involves a six wheel dump truck and a bicyclist. As a result of the crash one person has been pronounced dead.

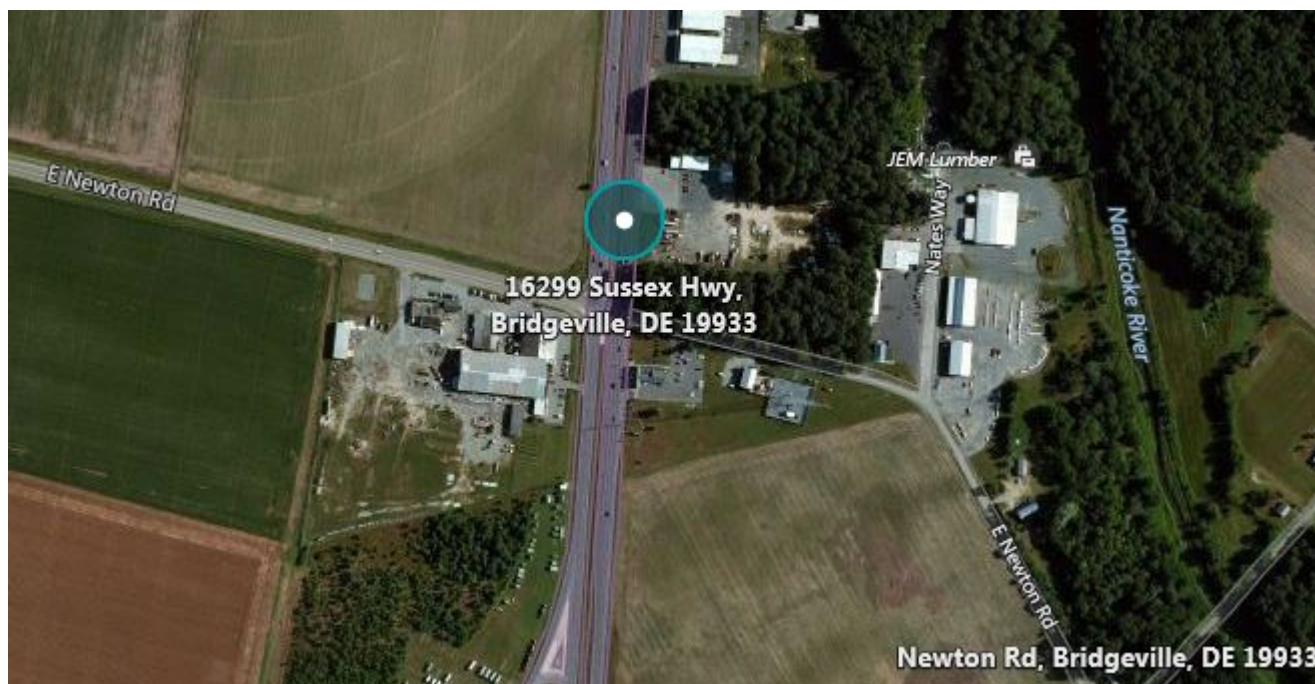
Both Wooten Road and Waleys Road is currently closed in the area of the crash. Commuters are asked to use caution and find alternate routes of travel.

The investigation into this crash by the Delaware State Police is in its early stages. More information will be released at the conclusion of the investigation.

Released: 061417 1001

-End-

***Update* Troopers Investigate Fatal Motorcycle Crash, Bridgeville**



*Presented by the Director of Public Information Sergeant
Richard D. Bratz*

Bridgeville – The Delaware State Police are releasing the name of the 33-year-old that died in the motorcycle crash north of Bridgeville as Joshua C. Hoffer of Millsboro, Delaware.

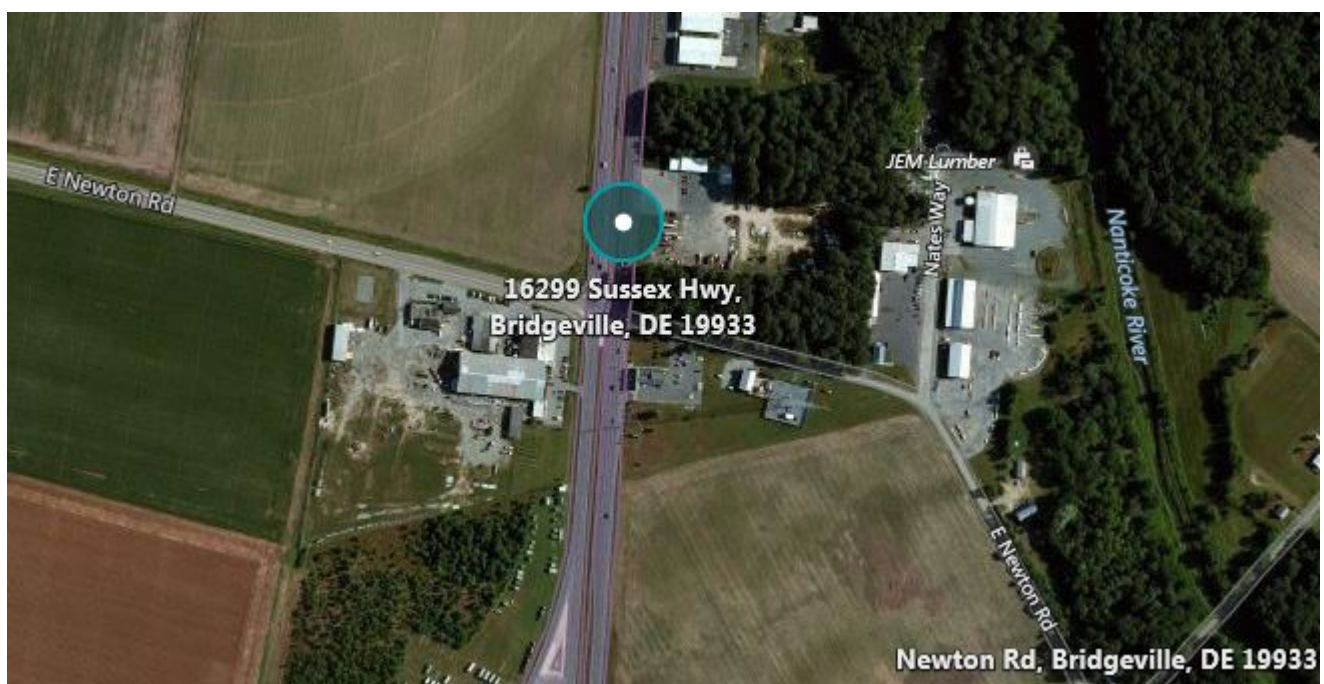
This crash remains under investigation by the Collision Reconstruction Unit.

[Troopers Investigate Fatal Motorcycle Crash, Bridgeville](#)

Released: 061417 0941

-End-

Troopers Investigate Fatal Motorcycle Crash, Bridgeville



***Presented by the Director of Public Information Sergeant
Richard D. Bratz***

Bridgeville – The Delaware State Police Collision Reconstruction Unit is investigating a fatal motorcycle crash that occurred today north of Bridgeville.

The incident occurred around 4:46 p.m. Tuesday, June 13, 2017 as a 33-year-old male from Millsboro was operating a 1986 Honda Shadow motorcycle traveling northbound on Sussex Highway, (U.S. 13) in the right lane approaching the intersection of East Newton Road, Bridgeville. A 2009 Chrysler Sebring, operated by Michael D. Sauerwein, 42 of Rosedale, Maryland was westbound on East Newton Road. For unknown reasons, the motorcycle operator failed to stop for the red light and continued through the intersection directly into the path of the Sebring. The front of the motorcycle struck the front left of the Sebring within the middle of the intersection. After impact the operator was ejected from his motorcycle onto the roadway. The Sebring also stopped in the middle of the intersection.

The male operator, who was not wearing a helmet, was transported to Nanticoke Memorial Hospital by ambulance where he was pronounced deceased. His name is being withheld pending the notification of next of kin.

Michael D. Sauerwein, who was properly restrained in a seat belt, was not injured.

This crash remains under investigation by the Delaware State Police Collision Reconstruction Unit. Impairment is not a factor in this collision on behalf of the vehicle operator; however results are unknown on the part of the motorcycle operator. Speed is also not believed to be a factor in this collision on behalf of either vehicle.

The intersection of Sussex Highway (U.S. 13) and East Newton Road was closed for approximately 2.5 hours as the crash was

investigated and cleared.

If anyone has any information or witnessed this crash they are asked to contact Corporal/3 K. Argo at (302)-703-3264. Information may also be provided by calling Delaware Crime Stoppers at 1-800-TIP-3333, via the internet at www.delaware.crimestoppersweb.com or by sending an anonymous tip by text to 274637 (CRIMES) using the keyword "DSP."

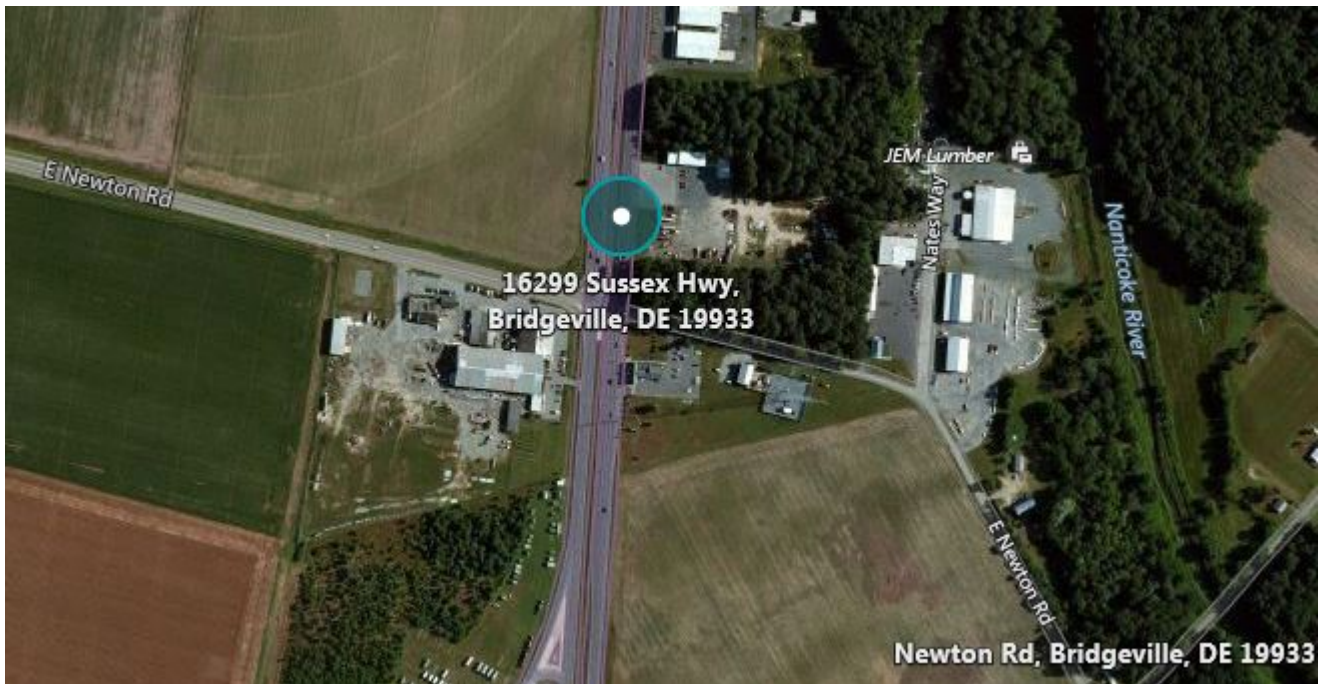
If you or someone you know is a victim or witness of crime or have lost a loved one to a sudden death and are in need of assistance, the Delaware State Police Victim Services Unit/Delaware Victim Center is available to offer you support and resources 24 hours a day through a toll-free hotline 1800 VICTIM-1. (1800 842-8461). You may also email the unit Director at debra.reed@delaware.gov.

Released: 061317 2051

-End-

[**Traffic Advisory-Motorcycle Crash-Bridgeville**](#)

****Traffic Advisory-Motorcycle
Crash-Bridgeville****



Presented by the Director of Public Information Sergeant Richard D. Bratz

Bridgeville- The Delaware State Police are currently investigating a motor vehicle crash involving a vehicle and motorcycle that occurred around 4:47 p.m. this afternoon. At this time the injuries are unknown.

US 13 northbound Sussex Highway and East Newton Road is currently closed in the area of the crash. Commuters are advised to use caution in the area of the crash as troopers are continuing to investigate the collision.

Released: 061317 1711

-End-

***Update* Tractor Trailer**

Crashes into House-Seafood



Presented by the Director of Public Information Sergeant Richard D. Bratz

Seaford- Delaware State Police are currently investigating a multiple vehicle crash involving two tractor-trailers where one crashed into a house west of Seaford.

The preliminary investigation has determined the crash occurred at approximately 6:12 a.m. today, Tuesday, June 13, 2017, as a 2017 Ford Mustang operated by Joshua Hurley, 19 of Cambridge, Maryland was traveling westbound on Stein Highway (SR20), just west of Shufelt Road (CR552). A 2007 Peterbilt tractor pulling a 2014 Wilson trailer operated by Anthony Hughes, 54 of Cambridge, Maryland was traveling eastbound on Stein Highway approaching the Mustang. A 2000 Peterbilt tractor pulling a 2015 Timpette trailer operated by William Robinson, 70 Federalsburg, Maryland was also traveling eastbound directly behind the first Tractor-Trailer. A 2004 GMC Sierra operated by Oscar Garcia, 37 of Seaford was traveling directly behind the Mustang. For unknown reasons the Mustang left its lane of travel and entered into the eastbound lane of Stein Highway. The first tractor trailer attempted to

avoid the collision; however the left front of the mustang struck the left side of the first tractor-trailer. After the initial collision, the first tractor-trailer continued east bound a short distance before pulling over to the shoulder of the roadway. The Ford Mustang spun counter-clockwise in the eastbound lane, directly in the path of the second Tractor-Trailer, resulting in a second collision. The Ford Mustang was pushed off of the north side of the roadway making contact with a utility pole, came to a stop and became engulfed in flames. The second Tractor-Trailer exited the north edge of the road and struck the front of a residence on Stein Highway. The GMC Sierra was not involved in the initial crash and swerved off the road and sustained minor damage. Both of the trailers were empty and were enroute to the Laurel Grain.

Joshua Hurley, who was properly seat-belted, was transported to the Nanticoke Memorial Hospital with minor injuries. Hurley was cited for Failure to Remain within a Single Lane.

Anthony Hughes, who was properly seat-belted, was uninjured in the crash.

William Robinson, who was properly seat-belted, was transported and admitted to the Nanticoke Memorial Hospital with serious but non-life threatening injuries.

Oscar Garcia, who was properly seat-belted, was transported to the Nanticoke Memorial Hospital with minor injuries.

The Delaware State Police continues to investigate the crash with the assistance of the following allied agencies who responded to the scene; Seaford Volunteer Fire Department, Blades Volunteer Fire Company, Bridgeville Volunteer Fire Company, Federalsburg Volunteer Fire Company, Ridgely Volunteer Fire Company, Leipsic Volunteer Fire Company, Hartly Volunteer Fire Company, Indian River Volunteer Company, Millsboro Volunteer Fire Company and Natural Resources, Sussex County EMS, Sussex County Technical Rescue, Kent County

Technical Rescue, Delaware Department of Transportation and Delaware Department of Natural Resources and Environmental Control.

Stein Highway was closed from Shufelt Road to Green Briar Road for approximately 4½ hours as the crash was investigated and cleared.

Released: 061317 1511

-End-

Traffic Advisory-Tractor Trailer Crashes into House

Presented by the Director of Public Information Sergeant Richard D. Bratz

Seaford- Delaware State Police are currently investigating a multiple vehicle crash involving a tractor-trailer that crashed into a house west of Seaford.

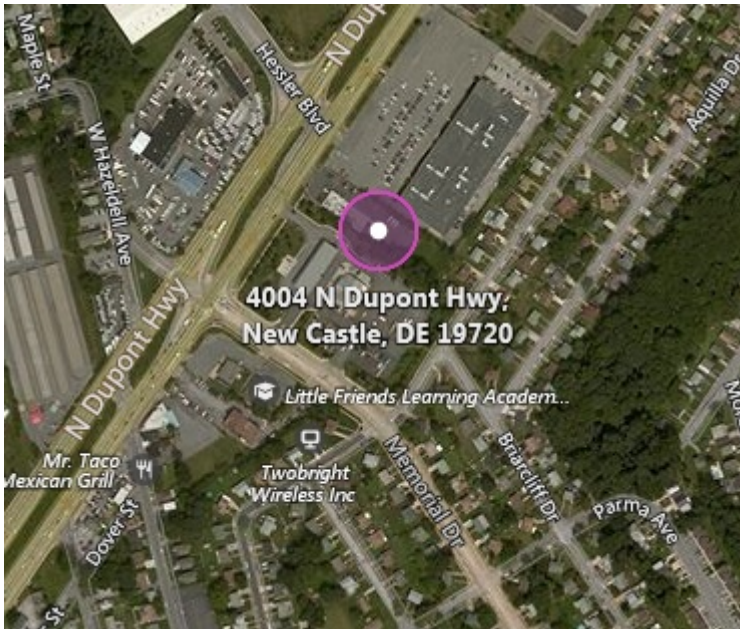
The crash occurred at approximately 6:05 a.m. today, Tuesday, June 13, 2017, on Stein Highway west of Shufelt Road, Seaford and involves a tractor-trailer. Injuries at this time are unknown.

As a result of the crash Stein Highway is closed between North Oak Road and Shufelt Road. Traffic has been diverted in the area and commuters are asked to find alternate routes of travel.

Released: 061317 0711

-End-

Troopers Investigate Attempted Robbery of Dunkin Donuts



Presented by Public Information Officer Master Corporal Jeffrey R. Hale

New Castle- Delaware State Police are currently investigating the attempted armed robbery of a New Castle area Dunkin Donuts which occurred yesterday evening.

The incident occurred on Monday, June 12, 2017 at approximately 6:55 p.m., as a male suspect entered the Dunkin Donuts located at 4004 N. DuPont Highway. The suspect approached the sales counter and displayed a knife. He then confronted a female employee and demanded money from the cash register. The employee however, backed away from the sales counter and fled to the rear of the business. The suspect subsequently exited the store and was last seen fleeing the parking lot in an older model light-colored mini van without obtaining any cash. There were no injuries.

The suspect was described as a black male 27-34 years of age.

He was 5'08"-5'10" tall and had black hair and brown eyes. There is no clothing description available.

If anyone has any information in reference to this incident they are asked to contact the Troop 2 Robbery unit at 302-365-8566. Information may also be provided by calling Delaware Crime Stoppers at 1-800-TIP-3333, via the internet at www.delaware.crimestoppersweb.com or by sending an anonymous tip by text to 274637 (CRIMES) using the keyword "DSP."

Released: 061317 1250

-end-

Traffic Advisory-Tractor Trailer Crashes into House



Presented by the Director of Public Information Sergeant Richard D. Bratz

Seaford- Delaware State Police are currently investigating a multiple vehicle crash involving a tractor-trailer that crashed into a house west of Seaford.

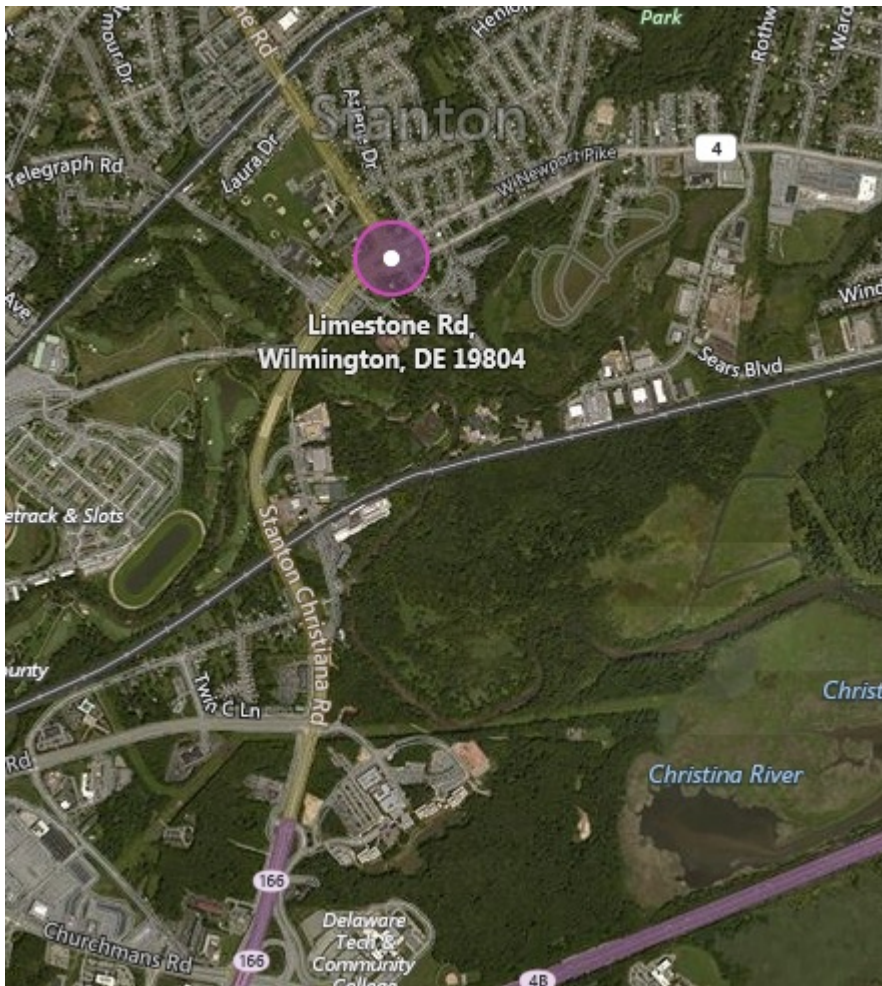
The crash occurred at approximately 6:05 a.m. today, Tuesday, June 13, 2017, on Stein Highway west of Shufelt Road, Seaford and involves a tractor-trailer. Injuries at this time are unknown.

As a result of the crash Stein Highway is closed between North Oak Road and Shufelt Road. Traffic has been diverted in the area and commuters are asked to find alternate routes of travel.

Released: 061317 0711

-End-

**Troopers On-Scene of
Overturned Tractor Trailer**



Presented by Public Information Officer Master Corporal Jeffrey R. Hale

Stanton- Delaware State Police are currently investigating single vehicle crash involving an overturned tractor-trailer that occurred this evening in Stanton.

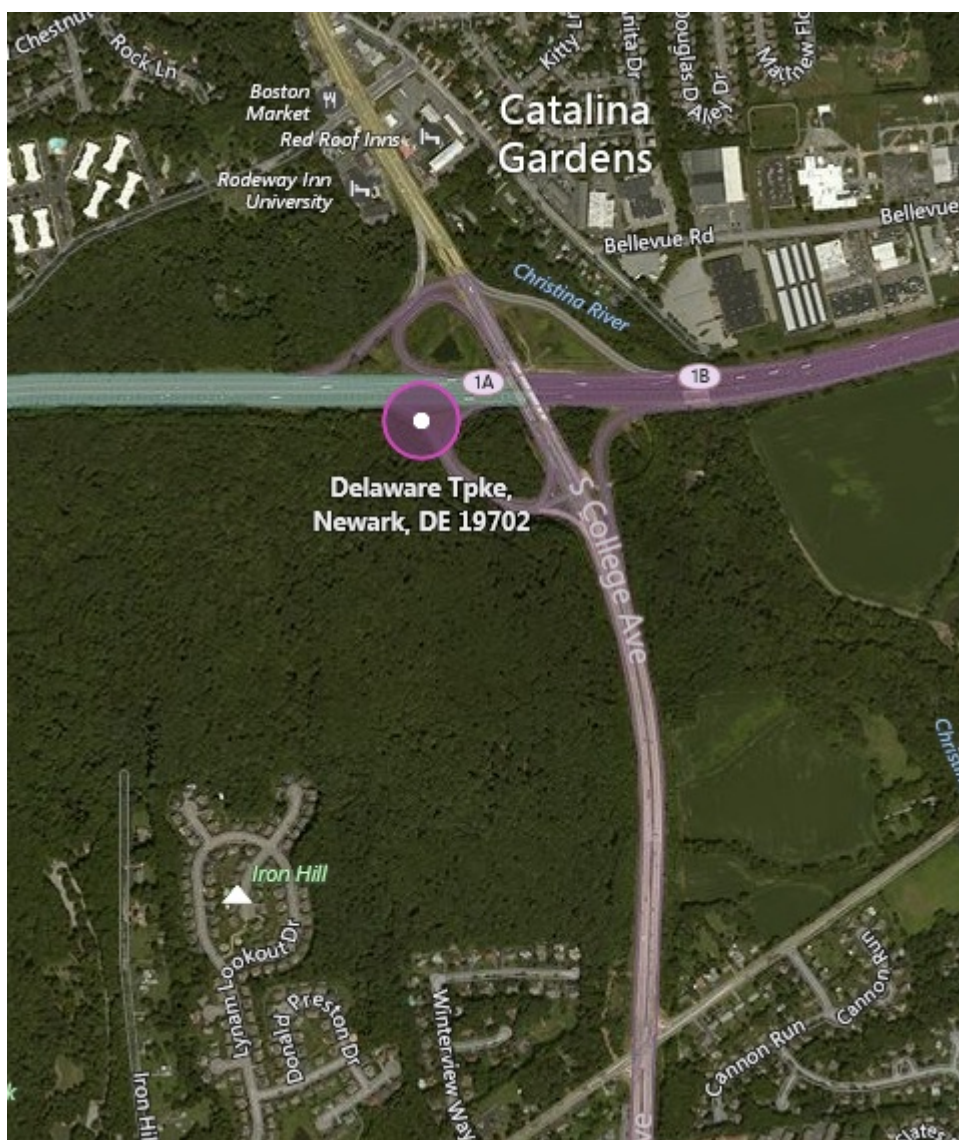
The crash occurred at approximately 7:53 p.m. today, Monday, June 12, 2017, at the intersection of northbound DE Rt. 7 (Limestone Road) and DE Rt. 4 (Stanton-Christiana Road) and involves an overturned empty tractor-trailer. There were no injuries.

As a result of the crash the entire intersection of Rt. 7 and Rt. 4 is closed to traffic as crews work to clean up the fuel spill and upright the tractor-trailer. Traffic has been diverted in the area and commuters are asked to find alternate routes of travel.

Released: 061217 2100

-end-

****Traffic Advisory** Troopers Investigating Crash Involving Overturned Tractor Trailer**



Presented by Public Information Officer Master Corporal Jeffrey R. Hale

Newark- Delaware State Police are currently investigating single vehicle crash involving an overturned tractor-trailer that occurred this afternoon in Newark.

The crash occurred at approximately 3:20 p.m. today, Monday, June 12, 2017, on the ramp from I-95 northbound to SR 896 (S. College Avenue), and involves an overturned tractor-trailer which was carrying a load of steel. There were no injuries.

As a result of the crash, the ramp from northbound I-95 to S. College Avenue will be closed for an undetermined amount of time. Commuters are asked to avoid the area and find an alternate route of travel.

Released: 061217 1550

-end-