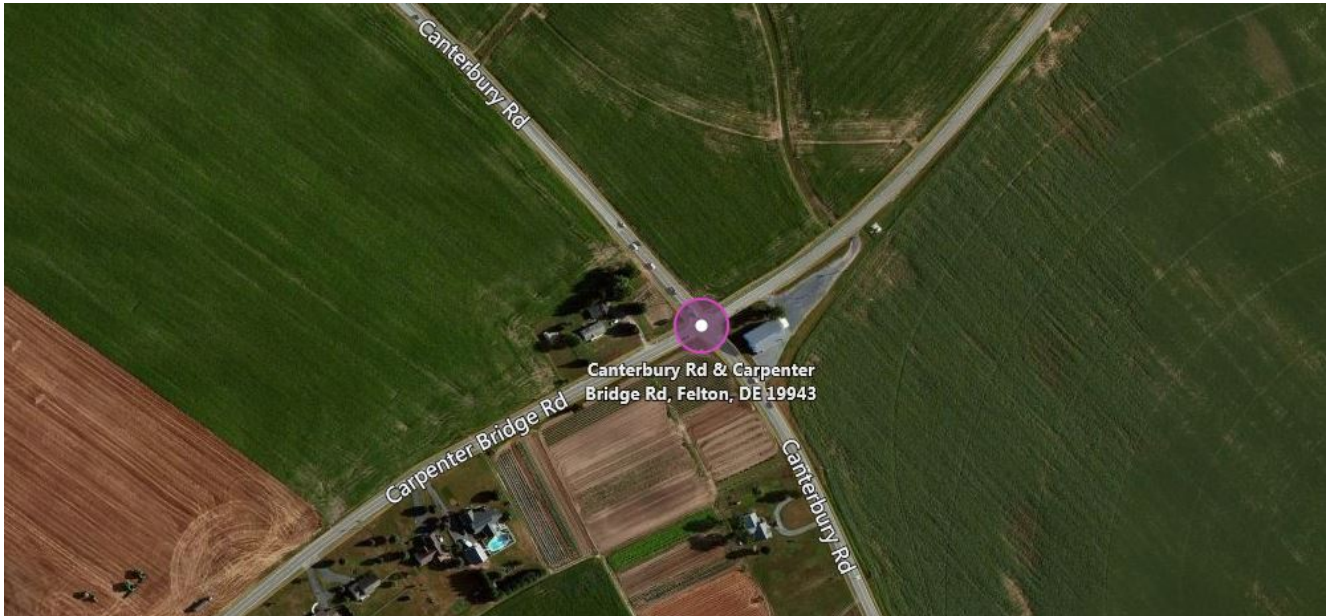


****Traffic Advisory** State Police Investigating Crash With Injuries – Laws Corner – Update**



Felton – The Delaware State Police Collision Reconstruction Unit continues to investigate a fatal motor vehicle crash which claimed the life of a Harrington woman yesterday afternoon.

The investigation thus far has determined that the crash occurred on Friday, September 15, 2017 at approximately 2:53 p.m., as Jerome Parker, 50, of Milton, DE, was operating a 1986 International dump truck and was traveling in an eastbound direction on Carpenter Bridge Road (SR35) approaching the intersection of Canterbury Road (SR15). Parker failed to stop at the posted stop sign at Canterbury Road and entered the intersection. The front of the dump truck then struck the left side of a 2008 Kia Spectra, which was traveling in a northbound direction on Canterbury Road through the intersection of Carpenter Bridge Road, and which was being

operated by Michele Handy, 62, of Harrington. Handy's vehicle became entangled under the dump truck and was pushed in an easterly direction and into the front of a 2011 Dodge Ram, which was stopped on westbound Carpenter Bridge Road, and which was being operated by a 35-year-old Harrington man. The Kia and the Dodge were both forced off of the north edge of Carpenter Bridge Road and into a small ditch where all three vehicles came to rest.

Michele Handy was properly restrained at the time of the crash and was pronounced dead at the scene.

Jerome Parker and the operator of the Dodge Ram were both properly restrained at the time of the crash and were not injured. Neither alcohol nor drug use appear to be factors in the crash.

The intersection of Carpenter Bridge Road and Canterbury Road was closed for approximately 4 hours as the crash was investigated and cleared.

This crash remains under investigation by the Delaware State Police.

If you or someone you know is a victim or witness of crime or have lost a loved one to a sudden death and are in need of assistance, the Delaware State Police Victim Services Unit/Delaware Victim Center is available to offer you support and resources 24 hours a day through a toll-free hotline 1800 VICTIM-1. (1800 842-8461). You may also email the unit Director at debra.reed@delaware.gov.

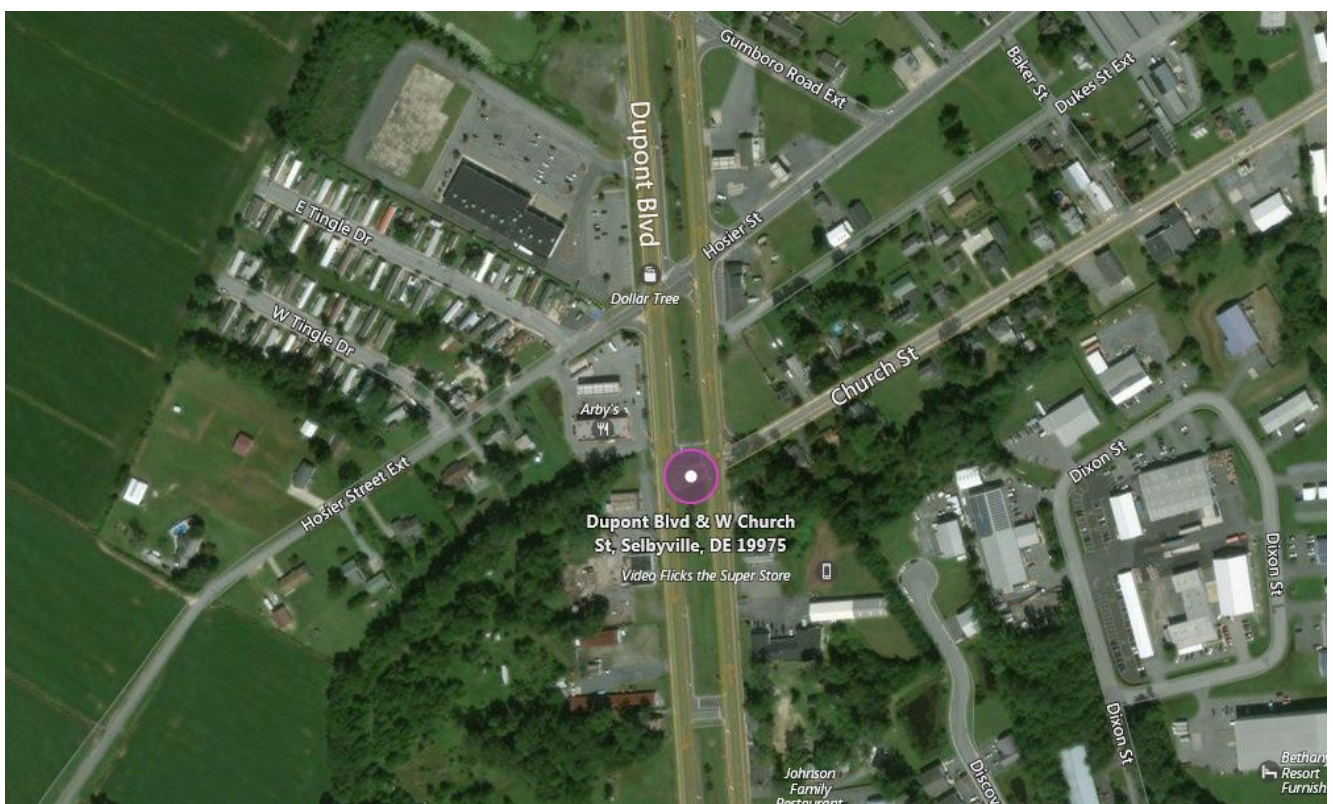
[Click on link to view original traffic advisory.](#)

Presented by Public Information Officer, Master Corporal Jeffrey R. Hale

Released: 091617 0640

-end-

****Traffic Advisory** Troopers Assisting with Serious Crash in Selbyville – Update**



Selbyville – The Delaware State Police Collision Reconstruction Unit is continuing their investigation into a serious motor vehicle crash which occurred yesterday afternoon in Selbyville.

The investigation thus far has determined that the crash occurred at approximately 1:05 p.m. on Friday, September 15, 2017, as Norma J. Parks, 81, of Bishopville, MD, was operating a 2016 Ford Expedition and was traveling in an eastbound direction out of the Goose Creek Convenience Store parking

lot, located at 9 S. DuPont Boulevard (US113). Parks was intending on crossing the southbound lanes of the highway and enter into the median crossover for Church Street. As Parks exited the parking lot and entered the roadway, she drove directly into the path of a 2012 Harley Davidson motorcycle, which was traveling in the left hand lane of southbound S. DuPont Boulevard, and which was being operated by a 44-year-old Newark man. The motorcycle, which also had a 58-year-old Newark woman as a passenger, struck the left front of the Ford, causing both occupants to be ejected. They then tumbled several times before coming to rest in the grass median. Norma Parks was able to bring her vehicle to a controlled stop at the scene.

The male operator of the Harley Davidson was treated at the scene by Sussex County Paramedics before being flown by Delaware State Police Aviation (Trooper 2) to the Christiana Hospital, where he was admitted with serious injuries. It is believed that he was wearing a helmet at the time of the crash, although it was not one approved by the D.O.T.

The female passenger on the motorcycle was also treated at the scene by Sussex County Paramedics, before being flown by LifeNet helicopter to the Christiana Hospital, where she was admitted with serious injuries. It is also believed that she was wearing a helmet at the time of the crash.

Norma Parks, who was not wearing a seatbelt at the time of the crash, was not injured.

Neither alcohol use nor speed are being considered as factors in this crash which remains under investigation by the Delaware State Police. Charges are expected to be filed.

The southbound lanes of DuPont Boulevard were closed and travel was restricted northbound for approximately 3 hours as the crash was investigated and cleared.

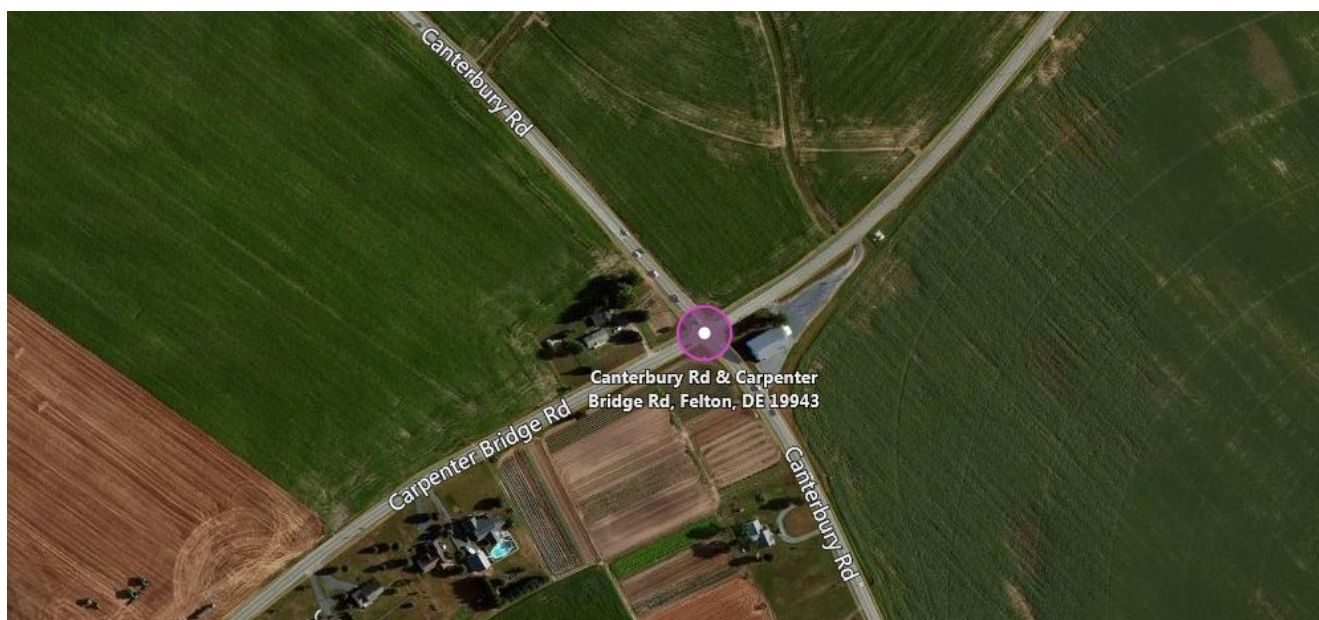
[Click on link to view original traffic advisory.](#)

Presented by Public Information Officer, Master Corporal
Jeffrey R. Hale

Released: 091617 0600

-end-

****Traffic Advisory** State Police Investigating Crash With Injuries – Laws Corner**



Felton – The Delaware State Police are currently on the scene of a serious crash southeast of Felton.

The incident occurred around 2:54 p.m. Friday September 15, 2017 at the intersection of Canterbury Road and Carpenter

Bridge Road and involves two vehicles and dump trunk. Injuries have been reported in the crash, however, the exact number and extent of the injuries is unknown at this time.

The intersection of Canterbury Road and Carpenter Bridge Road is currently closed. Commuters should expect delays in the area and find alternate routes of travel.

Further details will be released upon the conclusion of the investigation.

Please follow the Real Time Travel Advisories through DelDOT to get updates on the road opening by clicking: http://deldot.gov/information/travel_advisory/#trafficBox1 or by following them on Twitter: [@DelawareDOT](https://twitter.com/DelawareDOT).

Presented by Public Information Officer, Master Corporal Gary Fournier

Released: 091517 1545

###

****Traffic Advisory** Troopers
Assisting with Serious Crash
in Selbyville**



Selbyville – The Delaware State Police and Selbyville Police Department are currently on the scene of a serious crash on US113 in Selbyville.

The incident occurred around 1:05 p.m. Friday September 15, 2017 at the intersection of southbound DuPont Boulevard (US113) and West Church Street and involves a car and a motorcycle. Injuries have been reported in the crash, however, the exact number and extent of the injuries is unknown at this time.

US113 southbound and northbound is currently closed at Church Street. Commuters should expect delays in the area and find alternate routes of travel.

Further details will be released upon the conclusion of the investigation.

Please follow the Real Time Travel Advisories through DelDOT to get updates on the road opening by clicking: http://deldot.gov/information/travel_advisory/#trafficBox1 or by following them on Twitter: [@DelawareDOT](https://twitter.com/DelawareDOT).

Presented by Public Information Officer, Master Corporal Gary Fournier

Released: 091517 1410

###

****Traffic Advisory** – Troopers Investigating Fatal Motor Vehicle Crash – Update #2**

Wilmington – The Delaware State Police Collision Reconstruction Unit has identified the 44-year-old Newark man who was killed in the fatal motor vehicle crash which occurred yesterday, Thursday, September 14, 2017, on southbound I-95 just south of Wilmington as Taheed S. Williams.

This crash remains under investigation by the Delaware State Police.

[Click on link to view original Traffic Advisory](#)

[Click on link to view first update.](#)

Presented by Public Information Officer, Master Corporal Jeffrey R. Hale

Released: 091517 1345

-end-

****Traffic Advisory** – Troopers Investigating Fatal Motor Vehicle Crash – Update**

Wilmington – The Delaware State Police Collision Reconstruction Unit is continuing their investigation of a two vehicle crash which claimed the life of a Newark man this morning.

The investigation thus far has determined that the crash occurred at approximately 5:34 a.m. this morning, Thursday, September 14, 2017, as a 44-year-old Newark man was operating a 2008 Nissan Altima and was traveling in a southbound direction on I-95, approximately .5 miles south of Wilmington. For an unknown reason, the operator of the Altima lost control of his vehicle and veered to the right and then to the left. The front of the Altima then struck a concrete barrier before rotating in a counter-clockwise direction. It then came to rest in the roadway facing a northbound direction. Shortly thereafter, the Nissan was struck by a 2003 Toyota Camry, which was traveling on I-95 southbound in the left hand lane, and which was being operated by a 54-year-old Wilmington man. After the impact the Toyota caught fire, however, the operator was able to exit the vehicle before it became completely engulfed in flames.

The operator of the Nissan, who was not properly restrained at the time of the crash, was pronounced dead at the scene. His name is being withheld pending the notification of his next of kin. It is unknown at this time if impairment on the part of the victim was a factor in the crash. Excessive speed is not being considered as a factor.

The operator of the Toyota Camry, who was properly restrained at the time of the crash, was treated at the scene by New Castle County Paramedics. He was then transported to the Christiana Hospital where he was treated for his non-life threatening injuries.

This crash remains under investigation by the Delaware State Police, however, charges are not expected.

The southbound lanes of I-95 were closed for approximately six hours as the crash was investigated and cleared.

[Click on link to view original release.](#)

Presented by Public Information Officer, Master Corporal Jeffrey R. Hale

Released: 091417 1655

-end-

Troopers Seek Public's Assistance in Locating Wanted Subjects

Sussex County – The Delaware State Police are requesting the public's assistance in locating four subjects wanted in connection with various thefts and burglaries.

Brent E. Cierkowski, 26 of Ocean View, is wanted for eight counts of Felony Theft from a Senior, eight counts of Conspiracy 2nd, 11 counts of Criminal Trespass 3rd, three counts of Theft under \$1500, and two counts of Conspiracy

3rd. He is also wanted by Ocean View Police Department for various theft charges.

Jahlyek Major, 20 of Millsboro, is wanted for Burglary 2nd, Conspiracy 2nd, Theft under \$1500, and Criminal Mischief. He is also wanted out of Sussex County Court of Common Pleas on a *capias*.

Andrew C. Desmond, 34 of Bethany Beach, is wanted for Selling Stolen Property, Receiving Stolen Property, Falsifying a Business Document, and Theft by False Pretense. He is also wanted by Ocean View Police Department for various theft charges.

Clyde Campbell, 28 of Harbeson, is wanted for three counts of Burglary 2nd, Theft of a Motor Vehicle, Conspiracy 2nd, Selling Stolen Property, four counts of Theft, two counts of Criminal Mischief, and Falsifying a Business Document.

If anyone has any information in reference to Brent Cierkoski's or Jahlyek Major's whereabouts, they are asked to contact Detective A. Bluto at 302-752-3864. If anyone has any information in reference to Andrew Desmond's or Clyde Campbell's whereabouts, they are asked to contact Detective T. Powell at 302-752-3807. Information may also be provided by calling Delaware Crime Stoppers at 1-800-TIP-3333, via the internet at www.delaware.crimestoppersweb.com.

Presented by Public Information Officer, Master Corporal Gary Fournier

Released: 091417 1455

###

Click here: Delaware State Police Sponsors 3rd Annual Trunk-or-Treat Event-Georgetown

Join us for **Monday, October 30**
5:30pm - 8:30pm

This free community event to provide a safe & informative trick or treat event for youth of all ages.

Come dressed up & enjoy an interactive evening with your public safety friends.



FREE HOTDOG
for the first 200 kids
attending in costume



Call 302-232-3459 or Visit
dsp.delaware.gov/community_outreach.shtml

The Delaware State Police is sponsoring our 3rd Annual Trunk or Treat Event with our Public Safety Partners at the **Georgetown Division of Motor Vehicles located at 23737 DuPont Boulevard, Georgetown, Delaware**. Everyone is invited! Hope to see you there!

If you have any questions please contact: Corporal Juanita Huey at 302-232-3459 or send E-mail to juanita.huey-smith@delaware.gov

Please like and share. Thank you very much!

Families are invited to bring their children in costume for this fun, safe and free event. Come out on **Monday, October**

30th from 5:30 p.m. to 8:30 p.m. and interact with local police, fire and EMS agencies while receiving safety information and treats in a safe trick or treat environment. Free hotdogs will be offered to the first 200 youth attending in costume. Prizes will be awarded for Best, Scariest, Cutest, Funniest and Most Original Costume's.

For agencies and community service partners, we are inviting your agency to participate in this fun, safe and free event for the community youth. Come out with a vehicle from your agency and decorate it in a theme that you would like. This event allows for agencies to interact with the youth in a safe and fun location. Please show your support for the community and participate in the 3rd annual State Police Public Safety Trunk or Treat Event. Please **RSVP by October 1, 2017** if your department will be participating.

For more information or to secure a vendor location please contact Cpl/2 Huey via e-mail at juanita.huey-smtih@delaware.gov or visit [Community Outreach Trunk-Or-Treat](#)

You can follow the Delaware State Police by clicking on:

[Delaware State Police Official Website of the First State](#)

[Facebook](#)

[Twitter](#)

[Nextdoor](#)

Please tell us how we're doing via our [Citizen Satisfaction Survey](#).

Presented by the Director of Public Information Sergeant Richard D. Bratz

Released: 091417 1101

-End-

Troopers Investigating Crash Involving Pedestrian – Update

Wilmington (19804) – The Delaware State Police continue to investigate a crash in which a pedestrian was struck that occurred yesterday evening near Stanton.

The investigation thus far has determined that the crash occurred at approximately 7:53 p.m. on Wednesday, September 13, 2017, as Albert Tisdell, 57, of Wilmington, was attempting to cross the westbound lanes of DE Rt. 4 (W. Newport Pike) in the area of Rothwell Drive, in a northbound direction. As Tisdell stepped into the roadway, he entered directly into the path of a 2003 Chevrolet S10 pickup truck, which was being operated by a 17-year-old Wilmington male, and which was traveling in a westbound direction on Rt. 4. The front of the pickup truck struck Tisdell, knocking him to the ground where he came to rest. The operator of the Chevrolet was able to bring his vehicle to a controlled stop at the scene.

Albert Tisdell was treated at the scene by New Castle County Paramedics. He was then transported to the Christiana Hospital where he was admitted in critical condition. Alcohol use on the part of Tisdell is being considered as a factor in this crash.

There were no other injuries.

The westbound lanes of DE Rt. 4 were closed for approximately 1.5 hours as the crash was investigated and cleared. The investigation into the crash by the Delaware State Police is ongoing.

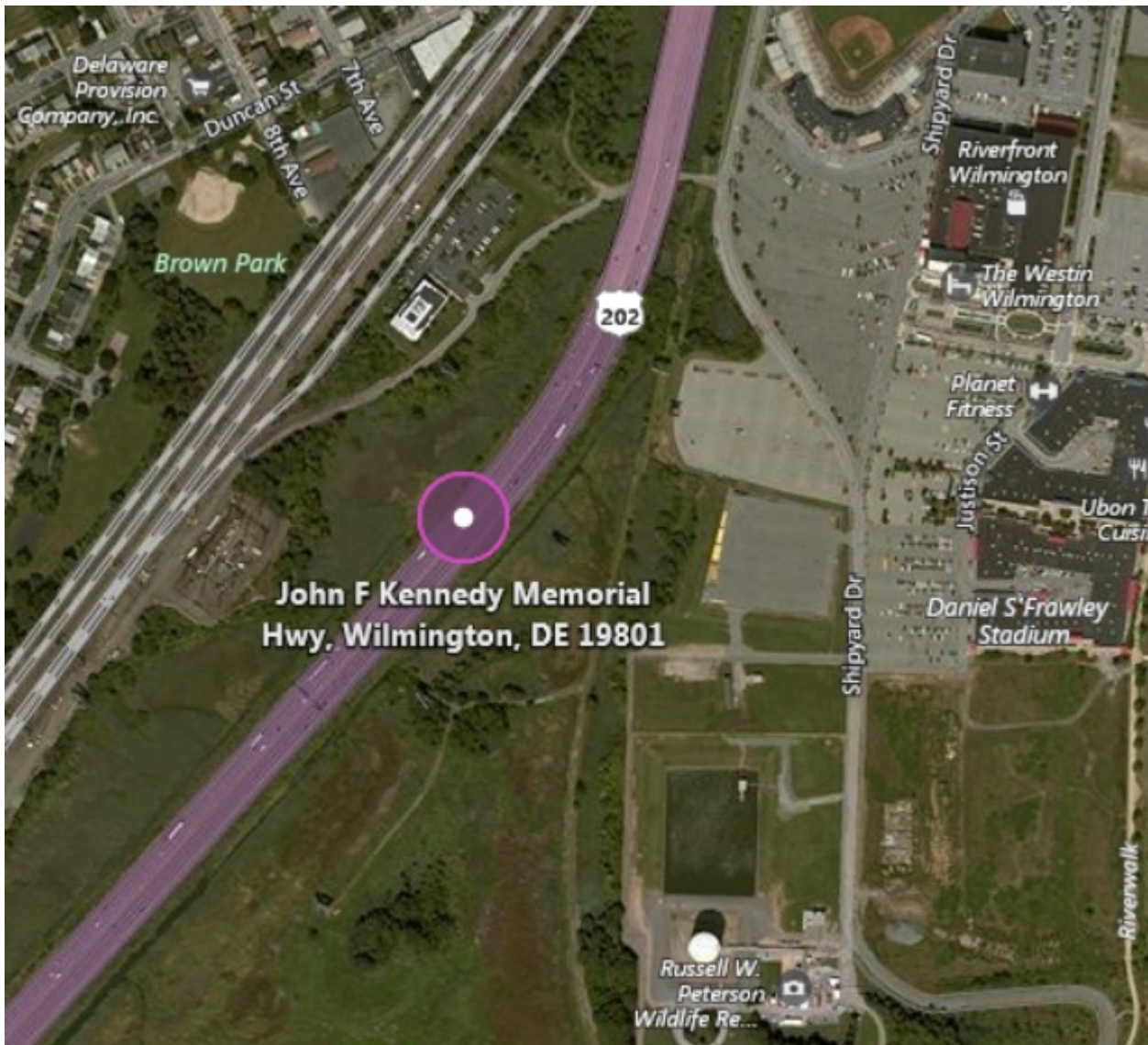
[Click on link to view original release.](#)

Presented by Public Information Officer, Master Corporal
Jeffrey R. Hale

Released: 091417 0735

-end-

****Traffic Advisory** -
Troopers Investigating Fatal
Motor Vehicle Crash**



Wilmington – The Delaware State Police are currently investigating a fatal motor vehicle crash which occurred this morning on I-95.

The initial investigation has determined that the crash occurred this morning, Thursday, September 14, 2017, on I-95 southbound in the area of Frawley Stadium and involves two vehicles. As a result of the crash, one subject has been declared dead at the scene. A second subject has been removed from the scene and has been transported to the Christiana Hospital. The extent of their injuries is unknown at this time.

The southbound lanes of I-95 have been closed to traffic. Commuters traveling into Delaware from Pennsylvania will be

forced to use I-495 southbound as an alternate route. Commuters who access I-95 southbound south of the I-495 split and plan on traveling south through the city of Wilmington, will be diverted off of the highway at 4th Street.

The Delaware State Police Collision Reconstruction Unit is enroute to the scene and will assume the investigation. **More details will be released at the conclusion of the investigation.**

If you or someone you know is a victim or witness of crime or have lost a loved one to a sudden death and are in need of assistance, the Delaware State Police Victim Services Unit/Delaware Victim Center is available to offer you support and resources 24 hours a day through a toll-free hotline

1800 VICTIM-1. (1800 842-8461). You may also email the unit Director at debra.reed@delaware.gov <<mailto:debra.reed@delaware.gov>>.

Presented by Public Information Officer, Master Corporal Jeffrey R. Hale

Released: 091417 0635

-end-