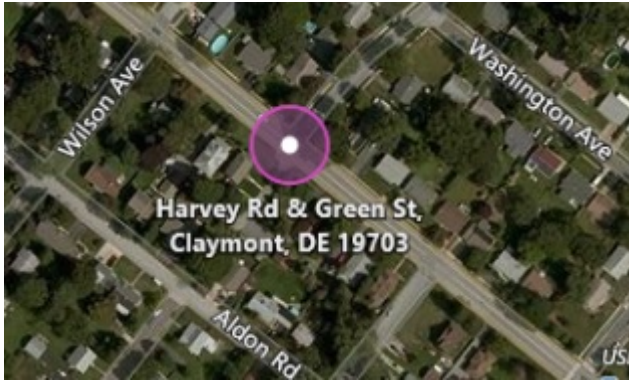


# Troopers Investigating Crash Involving a Motorcycle – Claymont



**Claymont** – Delaware State Police are investigating a serious crash involving a motorcycle that occurred at approximately 5:14 p.m., Thursday, May, 10, 2018, on Harvey Road in the area of Green Street, Claymont.

As a result of the crash, Harvey Road is closed between Wilson Avenue and Green Street. Motorists can expect delays in the area and are advised to seek alternate routes of travel.

For updated traffic conditions and road closure information click on the following link.

[http://www.deldot.gov/Traffic/travel\\_advisory/index.shtml#advisories](http://www.deldot.gov/Traffic/travel_advisory/index.shtml#advisories)

The investigation is in it's early stages with further details being released as they become available.

You can follow the Delaware State Police by clicking on:

[Delaware State Police Official Web Site](#)

[Facebook](#)

[Twitter](#)

[Nextdoor](#)

Please tell us how we're doing via our [Citizen Satisfaction Survey](#).

Presented by Public Information Officer, Master Corporal Michael Austin

Released: 051018 1810

-End-

---

## **\*UPDATE\* Troopers Seek Assistance in Identifying Hockessin Bank Robbery Suspect**



**Hockessin**— Delaware State Police detectives are continuing their investigation into a robbery at the Lantana Square M&T Bank that took place last week, and are asking for the public's assistance in identifying the suspect..

The incident occurred at approximately 4:34 p.m., Wednesday, May 2, 2018 at the M&T Bank, located at 151 Lantana Drive,

Hockessin. The above pictured suspect approached the teller counter and presented a demand note to a 58 year old female employee. The employee complied with the instructions on the note and turned over an undisclosed amount of cash to the suspect, who then fled in an unknown direction. The employee was not injured as a result of the incident.

Anyone with information regarding the identity of the above pictured suspect or who may have further information regarding the incident is asked to contact Detective A. Tenebruso of the Troop 2 Robbery Unit at 302-365-8435.

Information may also be provided by calling Delaware crime stoppers at 1-800-TIP-3333 or via the internet at <http://www.delaware.crimestoppersweb.com>

Click on the following link to view the original release:

[Troopers Investigating Hockessin Bank Robbery](#)

You can follow the Delaware State Police by clicking on:

[Delaware State Police Official Web Site](#)

[Facebook](#)

[Twitter](#)

[Nextdoor](#)

Please tell us how we're doing via our [Citizen Satisfaction Survey](#).

***Presented by Public Information Officer, Master Corporal Michael Austin***

Released: 051018 1200

-End-

---

# **\*Advisory\* Vehicle Break-ins on the Rise**



The Delaware State Police have been experiencing a rash of vehicle break-ins. This is not only occurring to residents who live on back un-lit county roads, but also those who live in well-lighted developments and mobile home parks. There have been multiple arrests in these cases, but ongoing criminal activity indicate additional individuals are continuing to target vehicles. Help us help you. The Delaware State Police highly suggest the following tips to help prevent our area residents from becoming a victim:

- Keep your doors to all of your vehicles locked at all times and windows shut.

- Do not leave items of value in your vehicle. This includes purses, wallets, credit cards, electronics, check books, money, SS card, loose change, documents and paperwork with your personal information listed.
- Store valuable tools inside your residence. If needed daily for work, create an easy system to load and unload daily, such as using storage containers to transport.
- Lock your glove box, which should only store your registration and insurance cards. Do not store your vehicle title in the glove box. Store it in a safe place in your residence.
- Do not leave items that perceive valuable, such as a laptop case with no laptop.
- Clear the vehicle of all clutter and personal items. This also can perceive valuables are hidden under items in the vehicle.
- Do not keep a spare vehicle key hidden in the same vehicle. Do not store house keys or other keys in your vehicle.
- If possible, keep your vehicle parked under a lighted area that you can check on from your residence.
- If you have a surveillance security system, include your vehicles in the angle of your camera system. If you locate a suspicious subject on your property, in the area of your vehicles, do not confront them, call 911 immediately.

Also, be a good witness for your neighbor, as you would want them to do the same for you. Pay attention to what is going on in your neighborhood, and report suspicious activity. Take the time to set preventative measures to protect your property and valuables. It only takes one time for someone to break into your vehicle, steal your personal property, and cause you a financial burden. Take the time to be preventative, it's worth it.

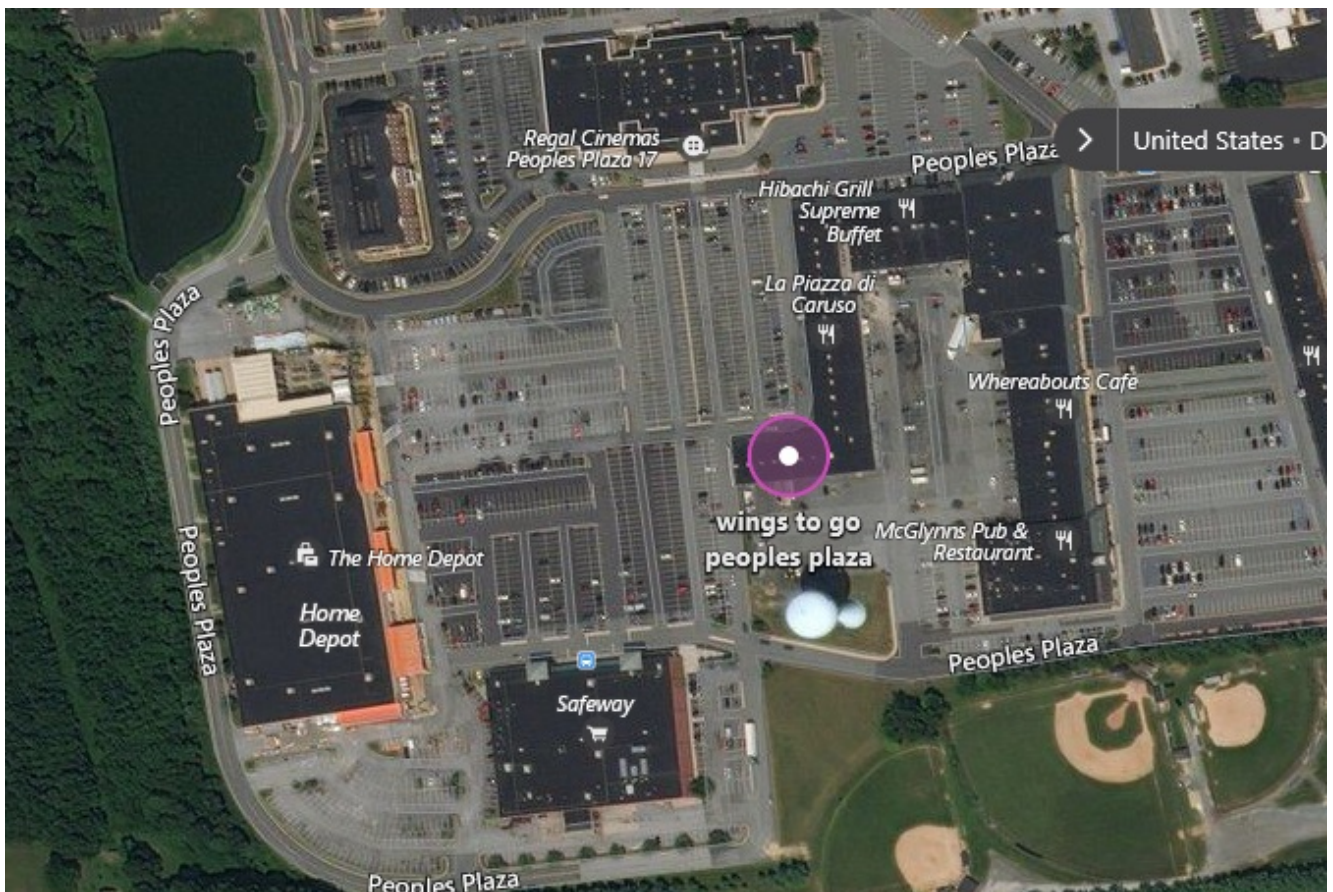
*Presented by Public Information Officer, Master Corporal*

Melissa Jaffe

Released: 050918 1912

-End-

# Troopers Investigating Knifepoint Robbery-Newark



**Newark** – Delaware State Police are investigating the knife point robbery of a Newark Wings To Go restaurant that took place Monday night.

The incident occurred at approximately 8:40 p.m., Monday, May 7, 2018, at the Wings To Go, located at 940 Peoples Plaza, Newark. A suspect with his face covered and brandishing a

knife, approached an 18 year old male employee at the sales counter and demanded cash from the register. The victim complied with the demand and turned over an undisclosed amount of money to the suspect, who then fled the business and was last seen running westbound in the parking. The employee was not injured as a result of the incident.

The suspect was described as a black male, 17-18 years of age, 5'8"-5'9", wearing a dark colored hoodie, dark colored face covering and in possession of a knife.

No surveillance images are available at this time.

The investigation is ongoing and anyone with information is asked to contact the Troop 2 Robbery Unit at 302-365-8566.

Information may also be provided by calling Delaware crime stoppers at 1-800-TIP-3333 or via the internet at <http://www.delaware.crimestoppersweb.com>

If you or someone you know is a victim or witness of crime or have lost a loved one to a sudden death and are in need of assistance, the Delaware State Police Victim Services Unit/Delaware Victim Center is available to offer you support and resources 24 hours a day through a toll free hotline 1800 VICTIM-1. (1800 842-8461). You may also email the unit Director at [debra.reed@delaware.gov](mailto:debra.reed@delaware.gov).

You can follow the Delaware State Police by clicking on:

[Delaware State Police Official Web Site](#)

[Facebook](#)

[Twitter](#)

[Nextdoor](#)

Please tell us how we're doing via our [Citizen Satisfaction Survey](#).

***Presented by Public Information Officer, Master Corporal Michael Austin***

Released: 050918 0800

-End-

---

# **Troopers Investigating Potential Suspicious Device- Newark**



***Newark (19702)***– The Delaware State Police are currently investigating a potential suspicious device at residence in the Country Creek development.

The preliminary investigation occurred on Tuesday, May 8, 2018 when Troopers responded to the unit block of Hunting Ridge Road in reference to information received of a possible suspicious device. Precautionary measures were taken and the immediate surrounding neighbors were evacuated.

The incident remains under investigation at this time and the Delaware State Police is working in conjunction with local and federal agencies to render the situation safe.

Further information will be released as it becomes available.

*Presented by Public Information Officer, Master Corporal Melissa Jaffe*

Released: 050818 1603

-End-

---

## **\*Update - Name Released\*** **Troopers Investigating Fatal Crash - Newark**

**Newark-** The Delaware State Police is releasing the name of the man that was killed in the Monday, May 7, 2018 crash on SR 273 eastbound east of Ruthar Drive as 21-year-old **Elijah Green** of Newark.

This crash remains under investigation by the Delaware State Police Collision Reconstruction Unit.

[State Police Investigating a Fatal Motorcycle Crash - Newark](#)

[\\*TRAFFIC ADVISORY\\* Road Closed Due to Crash - Newark](#)

*Presented by Public Information Officer, Master Corporal Melissa Jaffe*

Released: 050818 1551

-End-

---

# Former DSP Civilian Employee Arrested

The Delaware State Police announced today, May 8, 2018, that retired civilian employee Carl M. Rone has been arrested for Theft- False Pretense and Falsifying Business Records.

Carl M. Rone, 62 of Philadelphia, was hired by the Delaware State Police in 2006 as a Forensic Firearms Examiner; he was tasked with establishing the Delaware State Police Forensic Firearms Services Unit (FFSU) located in Dover, DE.

Rone, who was employed full time with DSP, was authorized to work an alternative work schedule. Furthermore, he was authorized to work outside employment during his off time.

In mid-November of 2017, it was discovered that Rone was not reporting to work when scheduled. An investigation found approximately 79 days in 2016 and 2017 where he turned in signed DSP activity sheets (time sheets) and received compensation for work that was not performed. The total amount for these 79 days is \$30,265.39. Following a review of the evidence developed in the criminal investigation; detectives

secured an arrest warrant for Rone, who was indicted by a Kent County Grand Jury on Monday, May 7, 2018.

On today's date, Rone turned himself in at Troop 3 and was subsequently arrested and charged with one count of Theft-False Pretense Greater than \$1500 (Felony) and one count of Falsifying Business Records. He was arraigned and released on a \$2000.00 unsecured bond from Superior Court of Kent County.

***Presented by the Director of Public Information, Sergeant Richard Bratz***

Released: 050818 1241

-End-

---

## State Police Investigating a Fatal Motorcycle Crash-Newark



**Newark** – The Delaware State Police Collision Reconstruction Unit is continuing to investigate a fatal motorcycle crash which occurred earlier this afternoon east of Newark.

The preliminary investigation has revealed the incident occurred at approximately 12:58 p.m., Monday, May 7, 2018 on SR 273 eastbound east of Ruthar Drive, Newark. A 2008 Kawasaki ZX600P8 operated by a 21 Newark man was traveling eastbound on SR 273 and had just cleared the intersection at Ruthar Drive. The motorcycle was in the left lane and for unknown reasons the operator began to lose control of the motorcycle and struck the face of the guardrail positioned in the median just as he was beginning to curve right. The front tire became dislodged during the collision with the guardrail. After the operator was ejected, the motorcycle continued to travel on its side in an easterly direction coming to a stop in the right lane of SR 273 eastbound.

The operator of the Kawasaki, who was wearing a helmet, was pronounced dead at the scene by responding EMS. Impairment on the part of the operator does not appear to be a contributing factor. Speed is being considered a factor in the crash. Identification of the victim is pending notification of next of kin.

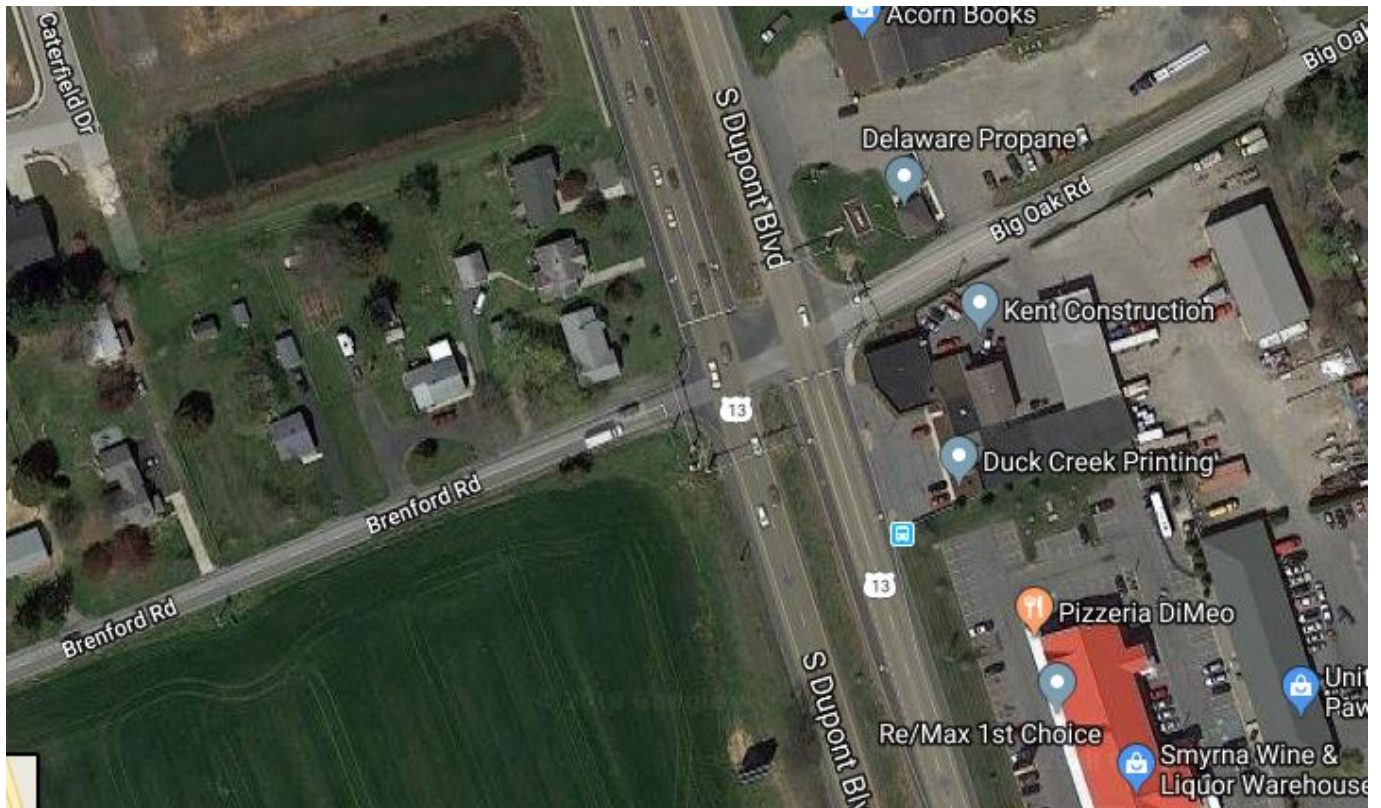
DE SR 273 eastbound was closed east of Ruthar Drive for approximately two hours while the crash was investigated and cleared.

[\\*TRAFFIC ADVISORY\\* Road Closed Due to Crash-Newark](#)

The investigation is ongoing and anyone with information regarding this incident is asked to contact Master Corporal J. Breen of the Collision Reconstruction Unit, by calling 302-365-8486.

Information may also be provided by calling Delaware crime stoppers at 1-800-TIP-3333 or via the internet at <http://www.delaware.crimestoppersweb.com>





**Smyrna**– The Delaware State Police Collision Reconstruction Unit is investigating a fatal crash that occurred earlier this morning.

The preliminary investigation has determined that the incident occurred at approximately 6:00 a.m. on Monday, May 7, 2018, as an International tractor trailer pulling a loaded trailer, was attempting to make a right turn from South Dupont Boulevard (US 13) onto westbound Brenford Road. Due to the length of the trailer, the operator had to complete the right turn from the right lane of US 13, outside of the right turn lane. A 2011 Nissan Versa was approaching the tractor trailer from the rear, and began to pass the tractor trailer by entering into the dedicated right turn lane. The Versa struck the tractor trailer on its left side with its right front bumper. The impact caused the Versa to be redirected into a steel light pole, and then into another larger steel light pole. Following the impact with the larger steel light pole, the Versa overturned onto its right side for its final resting place. The tractor trailer came to rest in the intersection of US 13 and Brenford Road.

The operator of the Versa, identified as 24-year-old **Rahvey Vails** of Clayton was wearing her seatbelt and was pronounced dead on scene by EMS. Impairment on her behalf is unknown at this time.

The operator of the tractor trailer, a 73-year-old man from Maryland, was wearing his seatbelt and did not sustain any injuries as a result of this crash. Impairment does not appear to be a factor on his behalf.

This crash remains under investigation by the Delaware State Police Collision Reconstruction Unit.

US 13 at the intersection with Brenford Road was closed for approximately 5 hours while the investigation was completed and the roadway was cleared.

Click on link for original release: [\\*TRAFFIC ADVISORY\\* S. Dupont Blvd \(RT 13\) at Brenford Road Closed Due to Crash-Smyrna](#)

*If you or someone you know is a victim or witness of crime or have lost a loved one to a sudden death and are in need of assistance, the Delaware State Police Victim Services Unit/Delaware Victim Center is available to offer you support and resources 24 hours a day through a toll free hotline 1800 VICTIM-1. (1800 842-8461). You may also email the unit Director at [debra.reed@delaware.gov](mailto:debra.reed@delaware.gov).*

You can follow the Delaware State Police by clicking on:

[Delaware State Police Official Web Site](#)

[Facebook](#)

[Twitter](#)

[Nextdoor](#)

Please tell us how we're doing via our [Citizen Satisfaction](#)

[Survey.](#)

*Presented by Public Information Officer, Master Corporal  
Melissa Jaffe*

Released: 050718 1455

-End-

---

# **\*TRAFFIC ADVISORY\* Road Closed Due to Crash-Newark**



*Newark – Delaware State Police are on scene of a crash*

involving a motorcycle that occurred today at approximately 1:00 p.m. which has the Route 273 at Ruthar Drive closed at this time.

Motorists can expect delays in the area and are advised to seek alternate routes of travel. For information regarding traffic conditions and road closure information click on the following link:

[http://www.deldot.gov/Traffic/travel\\_advisory/index.shtml#advisories.](http://www.deldot.gov/Traffic/travel_advisory/index.shtml#advisories)

The investigation is ongoing with further information being released as it becomes available.

You can follow the Delaware State Police by clicking on:

[Delaware State Police Official Web Site](#)

[Facebook](#)

[Twitter](#)

[Nextdoor](#)

Please tell us how we're doing via our [Citizen Satisfaction Survey](#).

*Presented by the Director of Public Information, Sergeant Richard Bratz*

Released: 050718 1331

-End-