

Troopers Investigating Fatal Crash – North Wilmington



Wilmington – The Delaware State Police are currently investigating a fatal crash involving a single vehicle, that occurred at approximately 3:28 a.m., Monday, July 16, 2018 on Concord Pike (U.S. 202) northbound in the area of Rocky Run Parkway, Wilmington.

The investigation is active and ongoing with further information being released as it becomes available.

Anyone with information regarding this incident is asked to contact the Troop 2 Collision Reconstruction Unit by calling 302-365-8483.

Information may also be provided by calling Delaware crime stoppers at 1-800-TIP-3333 or via the internet at <http://www.delaware.crimestoppersweb.com>

If you or someone you know is a victim or witness of crime or have lost a loved one to a sudden death and are in need of assistance, the Delaware State Police Victim Services

Unit/Delaware Victim Center is available to offer you support and resources 24 hours a day through a toll free hotline 1800 VICTIM-1. (1800 842-8461). You may also email the unit Director at debra.reed@delaware.gov.

You can follow the Delaware State Police by clicking on:

[Delaware State Police Official Web Site](#)

[Facebook](#)

[Twitter](#)

[Nextdoor](#)

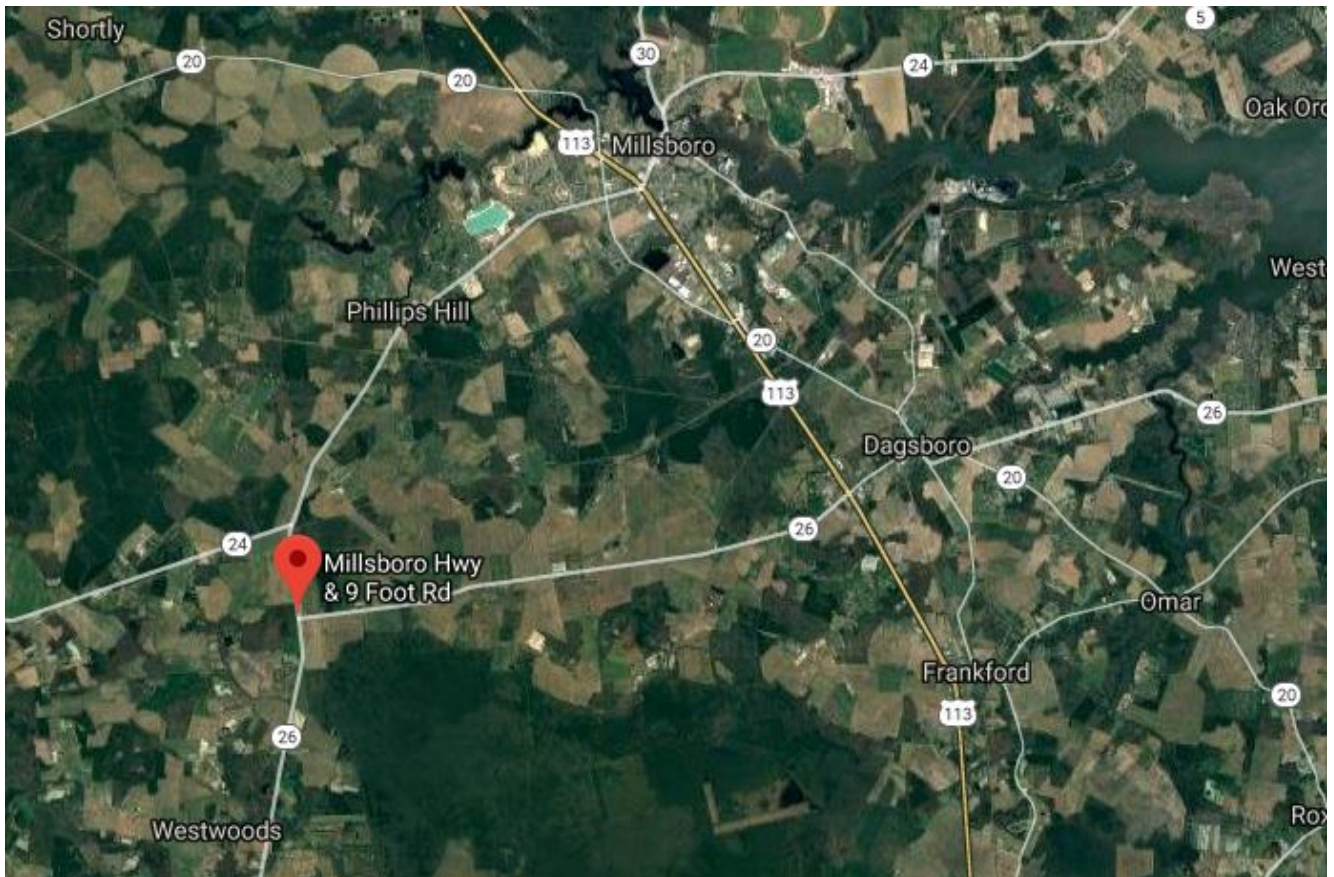
Please tell us how we're doing via our [Citizen Satisfaction Survey](#).

Presented by Public Information Officer, Master Corporal Michael Austin

Released: 071618 0730

-End-

Update **Troopers**
Investigating Fatal Crash-
Millsboro



Millsboro-The Delaware State Police Collision Reconstruction Unit is investigating a fatal crash that occurred early this afternoon on Millsboro Highway and Nine Foot Road west of Millsboro.

The preliminary investigation has determined that on July 15, 2018 at approximately 1:16 p.m., a 2011 Nissan Murano operated by a 48-year-old female of Laurel, was traveling southbound on Millsboro Highway (SR 24) approaching the intersection of Nine Foot Road, (SR 26) with the intention of turning left onto Nine Foot Road. A 2003 BMW Z4 convertible, operated by a 66-year-old man of Eden, Maryland, was northbound on Millsboro Highway approaching the same general vicinity. For unknown reasons, the operator of the Nissan failed to see the BMW traveling northbound and turned left directly in front of it. In attempt to try and avoid the collision, the operator of the BMW swerved to the right, however the front of the BMW impacted the right front of the Nissan in the middle of the northbound lane of travel. After impact, the Nissan rotated in a counter-clockwise direction before coming to rest on the

east edge of Millsboro Highway facing in a northeasterly direction. The BMW rotated in a clockwise direction before coming to rest on the east edge of Millsboro Highway facing in an easterly direction.

The operator of the Nissan and her three passengers were all properly restrained and were transported by ambulance to Nanticoke Memorial Hospital where they were treated for minor injuries and released.

The operator of the BMW was not properly restrained and sustained serious injuries. He was transported by ambulance to Nanticoke Memorial Hospital where he was later pronounced deceased. His name is being withheld pending notification of next of kin.

The crash continues to remain under investigation by the Delaware State Police Collision Reconstruction Unit. The roadway was closed for approximately three hours during the scene investigation and the removal of the vehicles.

[*Traffic Advisory* Troopers Investigating Serious Vehicle Crash – Millsboro](#)

If you or someone you know is a victim or witness of crime or have lost a loved one to a sudden death and are in need of assistance, the Delaware State Police Victim Services Unit/Delaware Victim Center is available to offer you support and resources 24 hours a day through a toll free hotline 1800 VICTIM-1. (1800 842-8461). You may also email the unit Director at debra.reed@delaware.gov.

Presented by Director of Public Information, Sergeant Richard Bratz

Released: 071518 1951

-End-

***Traffic Advisory* Troopers Investigating Serious Vehicle Crash – Milford**



Milford– Delaware State Police are currently on the scene of a serious crash on (SR1) Bay Road southbound one mile north of U.S. 113, Milford. SR 1 at New Wharf Road, both lanes will be shut down for an extended period of time.

Motorists can expect delays in the surrounding area and are asked to seek alternate routes of travel. For updated traffic conditions and road closure information log on to: http://www.deldot.gov/Traffic/travel_advisory/index.shtml#advisories.

The investigation is in its early stages with further information being released as it becomes available.

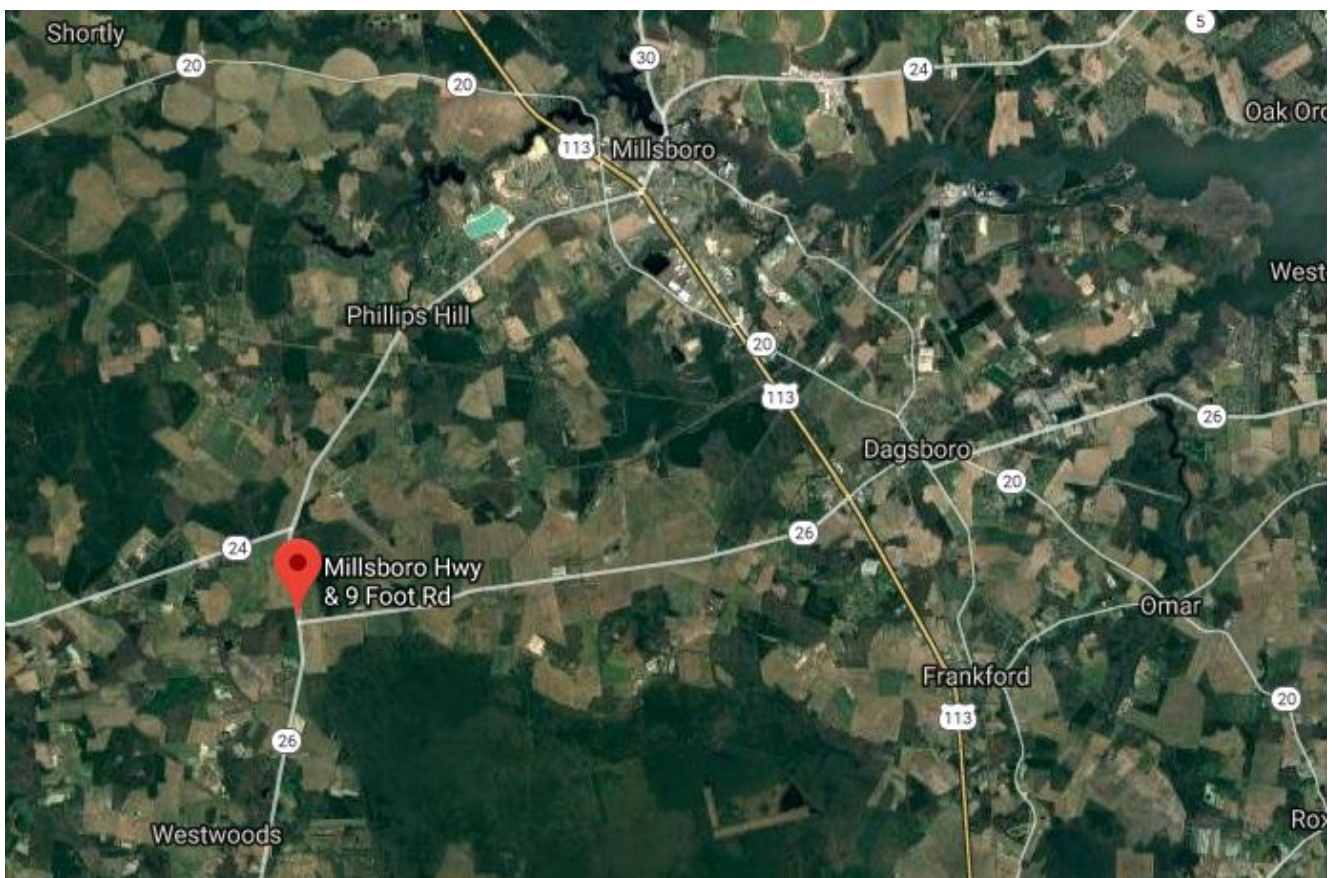
Presented by the Director of Public Information, Sergeant Richard

Bratz

Released: 071518 1841

-End-

***Traffic Advisory* Troopers Investigating Serious Vehicle Crash – Millsboro**



Millsboro– Delaware State Police are currently on the scene of a

serious crash on Millsboro Highway and Nine Foot Road west of Millsboro, Delaware.

Motorists can expect delays in the surrounding area and are asked to seek alternate routes of travel. For updated traffic conditions and road closure information log on to: http://www.deldot.gov/Traffic/travel_advisory/index.shtml#advisories.

The investigation is in its early stages with further information being released as it becomes available.

Presented by the Director of Public Information, Sergeant Richard Bratz

Released: 071518 1451

-End-

***Update* Name Released* Troopers Investigating Fatal Bicycle Crash-Felton**

Felton- The Delaware State Police are releasing the name of the man that was killed in a crash during the early morning hours on Saturday, July 14, 2018 on (U.S. 13) South DuPont Highway north of Felton as 28-year-old William O. Boyer of Felton, Delaware.

This crash remains under investigation by the Delaware State Police Collision Reconstruction Unit. Anyone with any

information is asked to Contact M/Cpl. W. Killen at Troop 3 Camden, at 302-698-8451.

[State Police Investigating Fatal Crash Involving Bicyclist – Felton](#)

Presented by the Director of Public Information, Sergeant Richard Bratz

Released: 071518 1121

-End-

***Update* Name Released* Troopers Investigating Fatal Motorcycle Crash-Laurel**

Laurel- The Delaware State Police are releasing the name of the man that was killed in the Saturday, July 14, 2018 crash on Ralph Road (CR 505) east of Waycross Road (CR505A) Laurel, as 51-year-old Robert Martinson of Laurel, Delaware.

This crash remains under investigation by the Delaware State Police Collision Reconstruction Unit.

[*Update* State Police Investigate a Fatal Motorcycle Crash-Laurel](#)

[*Traffic Advisory* Troopers Investigating Serious Motorcycle Crash – Laurel](#)

Presented by the Director of Public Information, Sergeant Richard Bratz

Released: 071518 1101

-End-

***Update* Name Released* Troopers Investigating Fatal Crash-New Castle**

New Castle – The Delaware State Police are releasing the name of the man that was killed in a crash during the early morning hours on Saturday, July 14, 2018 on I-495 southbound in the area of the I-295 northbound on-ramp, as 33-year-old James N. Williams of Sharon Hill, Pennsylvania.

The crash continues to remain under investigation by the Delaware State Police Collision Reconstruction Unit. Anyone with information pertaining to this incident is asked to please contact Troop 2 Collision Reconstruction Unit, Master Corporal J. Aube at 302-365-8483.

[*Update* Troopers Investigating Fatal Crash-New Castle](#)

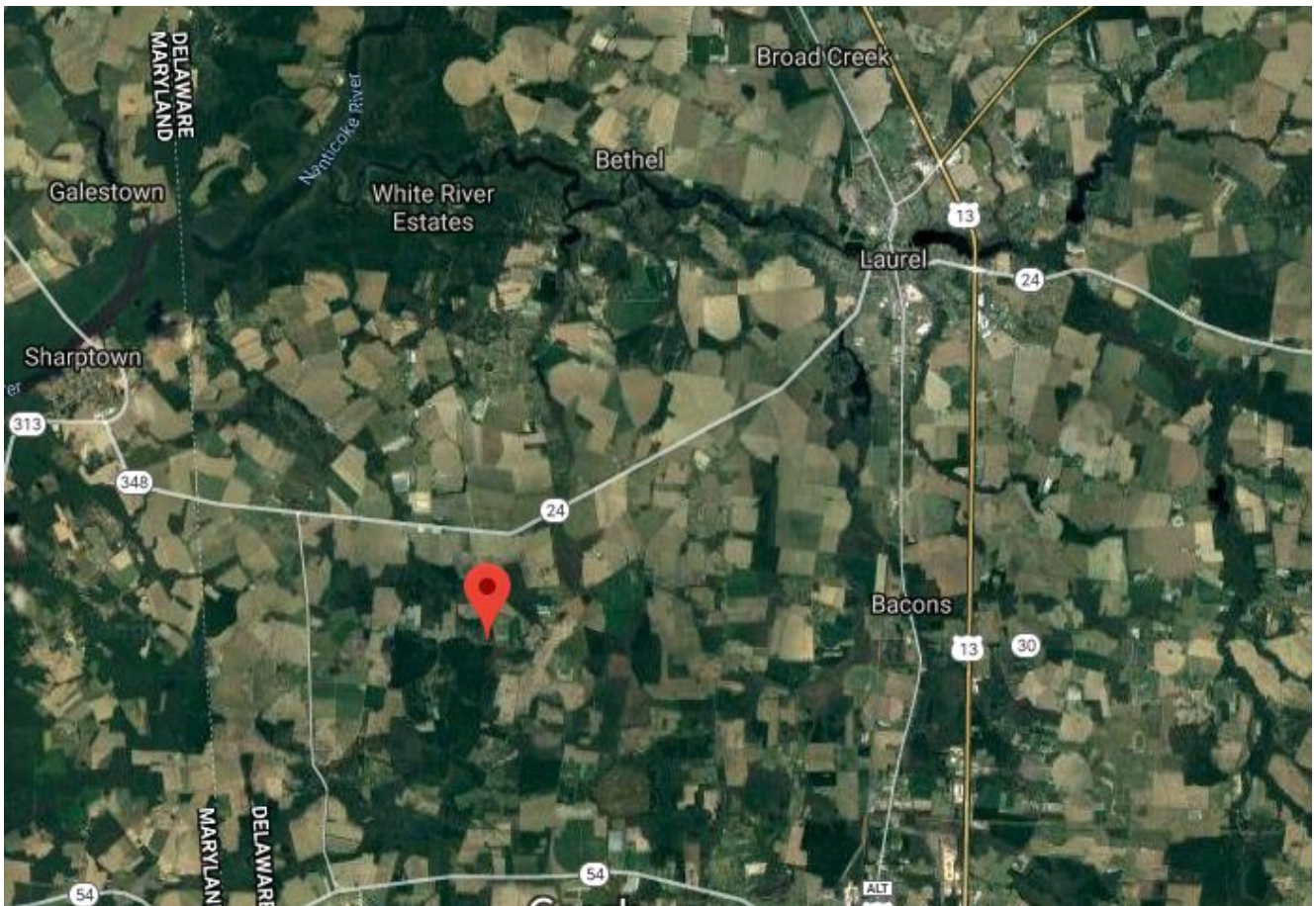
[*Traffic Advisory* Troopers Investigating Serious Crash – New Castle](#)

Presented by the Director of Public Information, Sergeant Richard Bratz

Released: 071518 1141

-End-

***Update* State Police Investigate a Fatal Motorcycle Crash-Laurel**



Laurel – The Delaware State Police Collision Reconstruction Unit is continuing to investigate a fatal motorcycle crash which occurred earlier this afternoon west of Laurel.

The preliminary investigation has revealed the incident occurred at approximately 3:47 p.m., Saturday, July 14, 2018 on Ralph Road (Cr 505) east of Waycross Road (Cr 505A) Laurel. A 2006 Harley Davidson MC, operated by a 51-year-old Laurel man, was traveling westbound on Ralphs Road east of Waycross Road. The motorcycle was approaching a sharp left curve in the roadway at an apparent high rate of speed. The

operator failed to negotiate the curve and exited the north edge of the roadway onto the soft grassy shoulder. The operator continued to ride the motorcycle, while the vehicle was in a right side yaw for a brief period of time before entering a wooded line. The motorcycle then collided with a maple tree and ejecting the operator forward.

The operator, who was not wearing a helmet, was pronounced deceased at the crash scene. Speed is being considered as a factor in the crash. The name is being withheld pending next of kin notification. Impairment on the part of the operator is unknown.

Ralph's Road in the area of the crash was closed for approximately 3.5 hours as the crash was investigated and cleared.

[*Traffic Advisory* Troopers Investigating Serious Motorcycle Crash – Laurel](#)

If you or someone you know is a victim or witness of crime or have lost a loved one to a sudden death and are in need of assistance, the Delaware State Police Victim Services Unit/Delaware Victim Center is available to offer you support and resources 24 hours a day through a toll free hotline 1800 VICTIM-1. (1800 842-8461). You may also email the unit Director at debra.reed@delaware.gov.

You can follow the Delaware State Police by clicking on:

[Delaware State Police Official Web Site](#)

[Facebook](#)

[Twitter](#)

[Nextdoor](#)

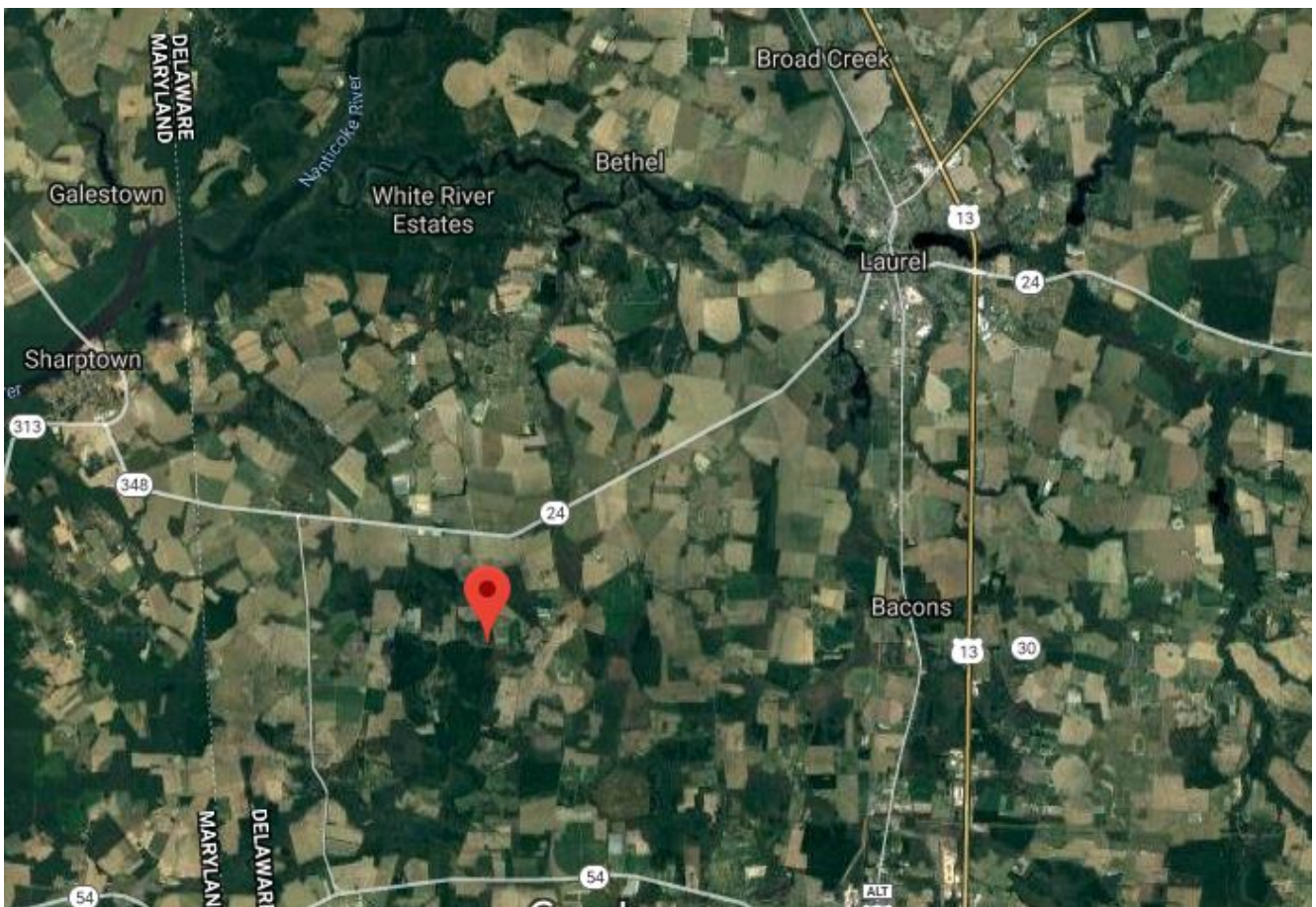
Please tell us how we're doing via our [Citizen Satisfaction Survey](#).

Presented by the Director of Public Information, Sergeant Richard Bratz

Released: 071418 2121

-End-

***Traffic Advisory* Troopers Investigating Serious Motorcycle Crash – Laurel**



Laurel – Delaware State Police are currently on scene of a serious motorcycle crash on Ralphs Road between Waycross Road and Skeeter Bit Lane west of Laurel.

Motorists can expect delays in the surrounding area and are asked to seek alternate routes of travel. For updated traffic conditions and

road closure information log on to:
[http://www.deldot.gov/Traffic/travel_advisory/index.shtml#advisories.](http://www.deldot.gov/Traffic/travel_advisory/index.shtml#advisories)

The investigation is in its early stages with further information being released as it becomes available.

Presented by the Director of Public Information, Sergeant Richard Bratz

Released: 071418 1621

-End-

Troopers Seek Public's Assistance in Locating Wanted Suspect – New Castle

New Castle- The Delaware State Police are asking for the public's assistance in locating a suspect who is wanted in connection with an Assault 1st degree.

The incident occurred on July 14, 2018 at approximately 2:13 a.m., as troopers were called to the Best Knights Inn for a stabbing. The investigation revealed the victim fled with serious stab wounds and was located nearby on Robinson Drive. The victim was transported to a local area hospital where he is being treated for his serious injuries.

Through investigative measures, the suspect has been identified as 30-year-old Sironne Deshields of New Castle, Delaware. Deshields is currently wanted for Assault 1st Degree

and Possession of a Deadly Weapon During the Commission of a Felony.

If anyone has information on the whereabouts of Sirrone Deshields they are asked to please contact Detective G. Rash Delaware State Police Troop #2 CIU at (302) (302)365-8468. Information may also be provided by calling Delaware crime stoppers at 1-800-TIP-3333 or via the internet at <http://www.delaware.crimestoppersweb.com>

You can follow the Delaware State Police by clicking on:

[Delaware State Police Official Web Site](#)

[Facebook](#)

[Twitter](#)

[Nextdoor](#)

Please tell us how we're doing via our [Citizen Satisfaction Survey](#).

Presented by the Director of Public Information, Sergeant Richard Bratz

Released: 071418 1601

-End-