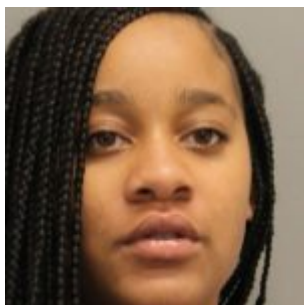
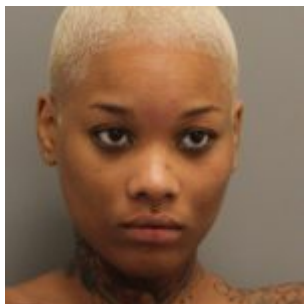


Traffic Stop Leads to Recovery of a Weapon and Three Arrests- Dover



Tilaiya M. Holland



Kiara N. Watkins



Jason D. Calhum

Dover— The Delaware State Police have arrested two adults and one juvenile after a traffic stop led to the discovery of a loaded handgun.

The incident occurred on Wednesday, September 19, 2018 at approximately 9:40 p.m. when a Trooper observed a 2005 Gray Buick Lacrosse, traveling southbound on Korean War Veterans Memorial Highway (SR 1) in the area of the Dover toll plaza, above the posted speed limit. A traffic stop was initiated

and contact was made with the driver, identified as 18-year-old **Tilaiya M. Holland**, of Middletown, the front seat passenger, 18-year-old **Kiara N. Watkins** of Dover, and rear seat passenger 17-year-old **Jason D. Calhum** of Middletown. An odor of marijuana was detected and all of the occupants were detained. Watkins became extremely disorderly and attempted to kick out the rear window to the Trooper's patrol vehicle.

A search of the vehicle was conducted and led to the discovery of the following:

- a loaded 9mm handgun
- a box of Remington ammunition containing 33 rounds
- .1 grams of marijuana

All three suspects were transported back to Troop 3.

Tilaiya M. Holland was charged with the following:

- Possession of a Firearm During the Commission of a Felony
- Carrying a Concealed Deadly Weapon
- Conspiracy Second Degree
- Possession of Marijuana
- Failure to Have Required Insurance
- Speeding

Holland was arraigned before the Justice of the Peace Court 7 and committed to the Delores J. Baylor Women's Correctional Institution on \$26,252.00 secured bond.

Kiara N. Watkins was charged with the following:

- Possession of a Firearm During the Commission of a Felony
- Carrying a Concealed Deadly Weapon
- Conspiracy Second Degree
- Possession of Marijuana
- Resisting Arrest

Watkins was arraigned before the Justice of the Peace Court 7 and committed to the Delores J. Baylor Women's Correctional Institution on \$26,750.00 secured bond.

Jason D. Calhum was charged with the following:

- Possession of a Firearm During the Commission of a Felony
- Possession of a Firearm by Prohibited Juvenile
- Carrying a Concealed Deadly Weapon
- Conspiracy Second Degree
- Possession of Marijuana

Calhum was arraigned before the Justice of the Peace Court 7 and released to a guardian.

You can follow the Delaware State Police by clicking on:

[Delaware State Police Official Web Site](#)

[Facebook](#)

[Twitter](#)

[Nextdoor](#)

Please tell us how we're doing via our [Citizen Satisfaction Survey](#).

*Presented by Public Information Officer, Master Corporal
Melissa Jaffe*

Released: 092018 1312

-End-

Trooper Arrest Wilmington man for Robbery Attempt – New Castle

New Castle – The Delaware State Police have arrested Carl Stokes, 47, of Wilmington for a robbery attempt that took place early Wednesday morning.

On Wednesday, September 19, 2018 at approximately 2:12 a.m., Troopers were dispatched to a robbery that had just occurred at the Super Fuel gas station, located at 3006 New Castle Avenue, in which a black male suspect, who implied that he was armed, attempted to take money from a male subject who was in the parking lot. Responding Troopers were provided a description of the suspect and advised that he was last seen in the area of the McDonalds, just north of the Super Fuel. Troopers responded to the area where they observed a subject matching the suspect description, running along a fence line adjacent to the Super Fuel. Troopers made contact with the suspect who complied with commands to stop, at which time he was taken in to custody without incident. Further investigation positively identified Stokes as the suspect responsible for the robbery attempt. The 20 year old male victim was not injured as a result of the incident.

Stokes was transported to Troop 2 where he was charged with Attempted Robbery 2nd Degree. He was then arraigned in Justice of the Peace Court #11 before being committed to the Howard R. Young Correctional Institution in lieu of \$5000.00 cash bail.

If you or someone you know is a victim or witness of crime or have lost a loved one to a sudden death and are in need of assistance, the Delaware State Police Victim Services

Unit/Delaware Victim Center is available to offer you support and resources 24 hours a day through a toll free hotline 1800 VICTIM-1. (1800 842-8461). You may also email the unit Director at debra.reed@delaware.gov.

You can follow the Delaware State Police by clicking on:

[Delaware State Police Official Web Site](#)

[Facebook](#)

[Twitter](#)

[Nextdoor](#)

Please tell us how we're doing via our [Citizen Satisfaction Survey](#).

Presented by Public Information Officer, Master Corporal Michael Austin

Released:092018 1315

-End-

Troopers Investigating Bank Robbery – New Castle



New Castle (19720) – The Delaware State Police are investigating the robbery of a Wilmington Manor area Wells Fargo Bank, that took place yesterday afternoon.

The incident occurred at approximately 2:18 p.m., Wednesday, September 19, 2018 at the Wells Fargo Bank, located at 1424 N. DuPont Highway, New Castle. A male suspect approached a female teller and provided her with a demand note, while implying that he was armed with an explosive device. The victim teller complied with the demand by turning over an undisclosed amount of cash to the suspect who then exited the bank, and was last seen on foot towards Stahl Avenue. The victim was not injured as a result of the incident.

The suspect is described as a white male, 6'0"-6'3", 160-200 lbs., wearing a blue shirt and blue jeans.

No surveillance images are available at this time.

The investigation is ongoing and anyone with information is asked to contact the Troop 2 Robbery Unit by calling 302-365-8566.

Information may also be provided by calling Delaware crime stoppers at 1-800-TIP-3333 or via the internet at <http://www.delaware.crimestoppersweb.com>

If you or someone you know is a victim or witness of crime or have lost a loved one to a sudden death and are in need of assistance, the Delaware State Police Victim Services Unit/Delaware Victim Center is available to offer you support and resources 24 hours a day through a toll free hotline 1800 VICTIM-1. (1800 842-8461). You may also email the unit Director at debra.reed@delaware.gov.

You can follow the Delaware State Police by clicking on:

[Delaware State Police Official Web Site](#)

[Facebook](#)

[Twitter](#)

[Nextdoor](#)

Please tell us how we're doing via our [Citizen Satisfaction Survey](#).

Presented by Public Information Officer, Master Corporal Michael Austin

Released:092018 1230

-End-

Motorists and Pedestrians BE

ON THE LOOK OUT! As the Fall Season Approaches, Deer and Pedestrian Crashes Increase

Over the past few years the Delaware State Police, while working with the Delaware Office of Highway Safety, Delaware Department of Transportation and AAA Mid-Atlantic, have sent out warnings to traveling motorists about the increase in deer crossings during deer rut and hunting seasons, which occur predominantly in October and November in Delaware. When taking a deeper look at 2016 and 2017 deer-related crash statistics, it is very clear the results of tenacious proactive work and warnings are making a difference.

As you will see, there's been marked improvement up and down the state of Delaware with the reduction of deer crashes over the past two years. The deer-related crash data, including the pedestrian crash data shows the results by region, month and time of day that pinpoints our focus to better apply resources. Our energy and tactics will be concentrated on what the data tells us while creating greater public safety awareness and education on a continual basis. Warning our communities, families and our motorists about the hazards in both pedestrian and deer related crashes in a specific clear-cut and effective way will optimistically make a positive difference. Ultimately, with this information, we will continue to work for the safety of everyone in Delaware as we all become motorists and/or pedestrians at some point.

Here are the stats:

1. Last year's press release regarding deer crashes and how to avoid them showed in 2016 there were a total of 2,042 animal and deer-related crashes with 1,010 animal/deer crashes being investigated in Sussex, 441 in Kent and

591 in New Castle County. See below for a comparison of the same type of crashes in each county in 2017. Also, see how many of the 2017 crashes occurred between dusk and dawn.

| | 2016 | 2017 |
|---|-------|-------|
| Total # of <u>animal and deer</u> crashes | 2,042 | 1,913 |
| # of animal and deer crashes in NCCo | 591 | 558 |
| # of animal and deer crashes in Kent | 441 | 409 |
| # of animal and deer crashes in Sussex | 1,010 | 946 |

(2017 Total Animal and Deer Crashes in Delaware that occurred from 6:00 p.m. to 6:00 a.m. was a total of 1,355 and of that total 375 in NCC, 300 in Kent and 680 in Sussex)

2. Deer-related crash information from 2017 (excluded animal-related crashes), to include the totals in each county and how many were Personal Injury Crashes)

| County | 2017 Deer-Related Crashes | 2017 Deer-Related Personal Injury |
|-------------------|---------------------------|-----------------------------------|
| New Castle County | 502 | 29 |
| Kent County | 377 | 10 |
| Sussex County | 893 | 25 |

Additionally, over the past few years Delaware has had an issue with pedestrians being struck by motor vehicles with the number of incidents increasing at the beginning of fall and continuing into the winter season. This is attributed to the longer periods of darkness during this time frame- our darker days.

| County | 2017 Total Pedestrian Crashes | 2017 Personal Injury Pedestrian Crashes | 2017 Pedestrian-Related Fatal Crashes |
|-------------------|-------------------------------|---|---------------------------------------|
| New Castle County | 129 | 88 | 14 |

| | | | |
|---------------|----|----|---|
| Kent County | 35 | 20 | 4 |
| Sussex County | 36 | 18 | 8 |

Pedestrian-related crash information, to include the following: 2017 totals for personal injury and fatal crashes, that occurred from September 1, 2017 to December 31, 2017 and how many of the crashes occurred during the hours of 8:00 p.m. to 6:00 a.m. (low light hours).

| County | Personal Injury Pedestrian Crashes from September to December 2017 | Personal Injury Pedestrian Crashes Between 8:00 p.m. to 6:00 a.m. |
|-------------------|--|---|
| New Castle County | 31 of the 88 | 4 |
| Kent County | 8 of the 20 | 5 |
| Sussex County | 10 of the 18 | 3 |

Personal Injury Crash data by month and and time of day.

| County | Pedestrian Fatal Crashes from September to December 2017 | Pedestrian Fatal Crashes between 8:00 p.m. to 6:00 a.m. |
|-------------------|--|---|
| New Castle County | 5 | 2 |
| Kent County | 1 | 1 |
| Sussex County | 6 | 4 |

Pedestrian Fatal Crashes data by month and time of day.

In an effort to properly address these issues, the Delaware State Police have chosen to combine these issues and combat them in a very strategic manner. First, DSP will continue to educate the public on these hazards and provide ways to lessen the related risks. We will also enforce the related laws, when appropriate. Additionally, the Delaware State Police, Office of Highway Safety (OHS) and Delaware Department of Transportation (DelDOT) and the American Automobile Association (AAA Mid-Atlantic) will join forces and utilize our resources and make a positive impact on Delaware roadways.

For instance, OHS will provide assistance for enforcement efforts, while DelDOT provides message boards throughout the

state to help warn motorists and pedestrians of the hazards. Lastly, DSP, DelDOT, OHS, and AAA Mid-Atlantic will continue to share the warnings and tips provided below by way of different media channels.

If MOTORISTS strictly follow these suggestions, they will significantly decrease their risk of being involved in a **deer-related**, or a **pedestrian-related crash**:

- Consider all roadways and not just back roads for deer crossings

- Consider slowing down during rut and hunting season (and the darker hours reference pedestrians)

- Never take your eyes off the roadway, especially during this vulnerable time of year

- Drive when you are alert and not when you are too tired to properly focus

- Do not drive a vehicle while impaired by illicit drugs, alcohol, or mind-

altering medications

- Stay focused on the task at hand, DRIVING, and do not take your eyes off

the road for even a split second

- Drive slower during deer rut, hunting and the darker (low light) times

- Be prepared for a deer to cross, or a pedestrian to be on the shoulder on

any type of roadway, due to the fact that deer cross on highways too,

where traffic speeds are higher and deer eyes are more

difficult to see

-Know Delaware's pedestrian-related laws and follow them and know what

to do if a pedestrian is approaching, or partially in a cross-walk

If PEDESTRIANS strictly follow these suggestions, they will significantly decrease their risk of being involved in a pedestrian-related crash:

-Follow all pedestrian laws, to include: walking while facing traffic, walking with a light, or reflective gear; crossing at crosswalks; and utilizing pedestrian-related signals. Research pedestrian laws online, if you are unfamiliar with them

-Do not walk on, or close to high-speed highways; Call 911 and get as far from high-speed traffic as you can, while waiting for assistance

-Do not walk on, or near a roadway, or highway, if you are under the influence of alcohol, or drugs, to include prescription medication that has mind-altering affects

"The statistics are clear that with shorter daylight hours, we see more vehicle crashes involving pedestrians and deer. Throughout the fall season, motorists will see message boards reminding them to use caution and drive safely. We want everyone, regardless of their mode of transportation, to get to their destination safely!"

Jennifer Cohan, Secretary of the Delaware Department of Transportation

"The fall and winter months are the most dangerous times for pedestrians. With low daylight hours, it is important for both pedestrians and drivers to be alert on Delaware's roadways and share the responsibility to keep themselves and

others on the road safe. OHS reminds all pedestrians to be visible, use crosswalks, and not to walk under the influence of drugs and/or alcohol. Drivers should be aware that pedestrians are often not where you would expect them. Drivers should be focused on the road at all times, slow down when pedestrians are present, and not drive under the influence of drugs and/or alcohol."

Kimberly Chesser, Acting Director Delaware Office of Highway Safety

"Whatever the reason, everyone is a pedestrian at some point, and everyone plays a role in keeping our roadways safe, look out for pedestrians at all times. When you are operating a vehicle, you have accepted a heightened responsibility for other people on the road. Safety is a two-way street. Often, pedestrians— especially younger ones— are not where they should be or where you would expect them to be. Remain vigilant at all times."

Ken Grant, Manager of Public and Government Affairs at AAA Mid-Atlantic.

You can follow the Delaware State Police by clicking on:

[Delaware State Police Official Web Site](#)

[Facebook](#)

[Twitter](#)

[Nextdoor](#)

Please tell us how we're doing via our [Citizen Satisfaction Survey](#).

Presented by the Director of Public Information, Sgt. Richard Bratz,

Released: 092018 1217

-End-

Delaware State Police Troop 6 to Host Community Cafe



Wilmington – Delaware State Police Troop 6 will be holding a Community Café on Thursday, September 27th, 2018, from 9:00–11:00 a.m., at the Five Points Fire Company, located at 209 S. Maryland Avenue, Wilmington.

Troop Commander Captain Matthew Cox, accompanied by his deputy commanders and the Community Outreach Trooper, will be in attendance to answer questions and address concerns from community members, specific to State Police jurisdiction in the Troop 6 patrol area.

In addition to the general discussion Captain Cox will present and discuss crime and traffic data related to activity along the Maryland Avenue corridor. Community members will also be instructed on how to access the crime mapping feature on the DSP website.

These Café's are held in an effort to build a stronger

relationship between the Delaware State Police and the communities that we so proudly serve.

We look forward to meeting you.

You can follow the Delaware State Police by clicking on:

[Delaware State Police Official Web Site](#)

[Facebook](#)

[Twitter](#)

[Nextdoor](#)

Please tell us how we're doing via our [Citizen Satisfaction Survey](#).

Presented by Public Information Officer, Master Corporal Michael Austin

Released:092018 1140

-End-

Troopers Conducting Sexual Assault Investigation – North Wilmington

Wilmington – The Delaware State Police are investigating a sexual assault incident that took place in North Wilmington over the weekend.

The investigation has determined that on Saturday, September 15, 2018 a woman and her female friend, were seeking

transportation from Dover to their respective residences. At approximately 10:00 a.m., while still in Dover, they were offered and accepted a ride from an unknown black male who was operating a black, unknown make and model 4 door vehicle. After driving north from Dover, the Wilmington woman was dropped off near Wilmington as planned. The other woman remained in the vehicle in anticipation of being driven to her home as agreed upon. Instead of continuing on to her home, the male suspect pulled in to the Merchant Square Shopping Center located in the 4000 block of Governor Printz Boulevard, Wilmington, at which time he demanded sex from the female victim, which she refused.

The suspect then drove to a secluded area, where he parked. The suspect then forcibly removed the victim from the vehicle and proceeded to sexually assault her. After the suspect had left the area in his vehicle the victim was able to flag down a passing motorist who allowed her to use a phone to call 911. The victim was transported to an area hospital where she was treated for serious injuries.

The suspect is described as black male, 5'9", 190 lbs., dark complexion, with short gray hair.

The investigation is ongoing and anyone with information regarding this incident is asked to contact Detective A. Lloyd of the Troop2 Major Crimes Unit by calling 302-365-8411.

Information may also be provided by calling Delaware crime stoppers at 1-800-TIP-3333 or via the internet at <http://www.delaware.crimestoppersweb.com>

Because of the sensitive nature of this case, and in consideration for the victim, only limited information will be released.

If you or someone you know is a victim or witness of crime or have lost a loved one to a sudden death and are in need of assistance, the Delaware State Police Victim Services

Unit/Delaware Victim Center is available to offer you support and resources 24 hours a day through a toll free hotline 1800 VICTIM-1. (1800 842-8461). You may also email the unit Director at debra.reed@delaware.gov.

You can follow the Delaware State Police by clicking on:

[Delaware State Police Official Web Site](#)

[Facebook](#)

[Twitter](#)

[Nextdoor](#)

Please tell us how we're doing via our [Citizen Satisfaction Survey](#).

Presented by Public Information Officer, Master Corporal Michael Austin

Released:091918 1650

-End-

Troopers Arrest Two Men on Assault Charges-Bridgeville

Bridgeville— The Delaware State Police have arrested two men after the repossession of a vehicle led to an assault.

The incident was reported on Tuesday, September 18, 2018 at approximately 12:20 p.m. when a Trooper was dispatched to the 6000 block of Federalsburg Road for an assault complaint. Upon arrival, the Trooper made contact with a 37-year-old

male, who advised on Saturday, September 15, 2018, he was in his driveway when a black truck with a vehicle lift backed up into his driveway and two males got out. The victim advised the males told him they were there to repossess his 2002 Dodge Caravan. As the victim laid on the lift, the two males began pulling him off, which led to one of the suspects spraying the victim in the face with mace. The suspects subsequently removed the victim from the lift, and left the residence with the Caravan.

During the altercation, two children, ages 5 and 11 witnessed the incident.

Through investigative measures, the suspects were identified as 46-year-old **Michael R. Milligan** of Laurel and 23-year-old **Raymond M. Hitchens** of Georgetown.

Milligan and Hitchens turned themselves in at Troop 5 and were charged with the following:

- Assault Second Degree With a Disabling Chemical Spray (Felony)
- Conspiracy Second Degree (Felony)
- Endangering the Welfare of a Child (2 counts)

Both were arraigned before the Justice of the Peace Court 2 and released on \$7,000.00 unsecured bond.

You can follow the Delaware State Police by clicking on:

[Delaware State Police Official Web Site](#)

[Facebook](#)

[Twitter](#)

[Nextdoor](#)

Please tell us how we're doing via our [Citizen Satisfaction Survey](#).

*Presented by Public Information Officer, Master Corporal
Melissa Jaffe*

Released: 091918 1553

-End-

Troopers Investigating Bank Robbery – Fairfax



Wilmington (19803) – The Delaware State Police are investigating the robbery of a Fairfax area Wells Fargo Bank, that took place just before noon today.

The incident occurred at approximately 11:14 a.m., Tuesday, September 18, 2018 at the Wells Fargo Bank, located at 2011 Concord Pike, Wilmington. A male suspect approached a female teller and provided her with a demand note, while implying that he was armed with an explosive device. The victim teller complied with the demand by turning over an undisclosed amount of cash to the suspect who then exited the bank, and fled in an unknown direction. The victim was not injured as a result of the incident.

The suspect is described as a white male, 6'0"-6'3", 160-200 lbs., thin build, balding, wearing a blue shirt and blue jeans.

No surveillance images are available at this time.

The investigation is ongoing and anyone with information is asked to contact the Troop 2 robbery Unit by calling 302-365-8566.

Information may also be provided by calling Delaware crime stoppers at 1-800-TIP-3333 or via the internet at <http://www.delaware.crimestoppersweb.com>

If you or someone you know is a victim or witness of crime or have lost a loved one to a sudden death and are in need of assistance, the Delaware State Police Victim Services Unit/Delaware Victim Center is available to offer you support and resources 24 hours a day through a toll free hotline 1800 VICTIM-1. (1800 842-8461). You may also email the unit Director at debra.reed@delaware.gov.

You can follow the Delaware State Police by clicking on:

[Delaware State Police Official Web Site](#)

[Facebook](#)

[Twitter](#)

[Nextdoor](#)

Please tell us how we're doing via our [Citizen Satisfaction Survey](#).

Presented by Public Information Officer, Master Corporal Michael Austin

Released:091818 1515

-End-

Troopers Arrest Newark Couple for Drug Dealing

Newark – The Delaware State Police Governor’s Task Force with the assistance of officers from Probation and Parole have arrested a husband and wife from Newark, after a week long investigation into suspected drug dealing at a Newark area motel.

On Monday, September 10, 2018 detectives obtained information and initiated an investigation into suspected drug dealing that was taking place in the area of the Days Inn motel, located at 900 Churchman’s Rd., Newark. During the course of the investigation Jeffrey Radcliffe, 32, and Devon R. Rhodes, 38, both of Newark, were developed as suspects.

On Monday, September 17, at approximately 10:15 p.m., Rhodes was contacted as she sat in a gray, 2008 BMW, which was parked in the lot of the Wawa, located at 4651 Stanton-Ogletown Rd. A subsequent search of Rhodes and the BMW resulted in the recovery of 6 grams of raw heroin. Further investigation revealed that Rhodes was occupying a room at the Churchman’s Rd., Days Inn along with her husband Jeffrey Radcliffe, and their two children ages 8 and 9.

A subsequent search of the motel room resulted in the recovery and seizure of the following:

- 202 grams of Heroin
- 154 grams of Methamphetamine
- \$8,900.00 in suspected drug money
- Paraphernalia for manufacturing and packaging drugs

Rhodes and Radcliffe were taken in to custody without incident

and transported to Troop 2 where they were each charged with the following:

- Possession with Intent to Deliver Heroin in a Tier 4 Quantity (2 counts)
- Possession of Heroin in a Tier 5 Quantity (2 counts)
- Possession with Intent to Deliver Methamphetamine in a Tier 4 Quantity
- Possession of Methamphetamine in a Tier 5 Quantity
- Unlawfully Operate a Clandestine Laboratory
- Conspiracy 2nd Degree
- Endangering the Welfare of a Child (2 counts)

Both were then arraigned in Justice of the Peace Court 11 with bail being set at \$383,000.00 cash, each.

Rhodes was committed to the Dolores J. Baylor Women's Correctional Institution and Radcliffe to the Howard R. Young Correctional Institution.

The children were turned over to the care of a family member.

You can follow the Delaware State Police by clicking on:

[Delaware State Police Official Web Site](#)

[Facebook](#)

[Twitter](#)

[Nextdoor](#)

Please tell us how we're doing via our [Citizen Satisfaction Survey](#).

Presented by Public Information Officer, Master Corporal Michael Austin

Released:091818 1245

-End-

Pedestrian Struck Coastal Highway - Lewes

Lewes– The Delaware State Police Collision Reconstruction Unit is currently investigating a crash involving a Delaware State Trooper and a pedestrian that occurred earlier this morning.

The incident occurred at approximately 5:04 a.m., Tuesday, September 18, 2018, as a fully marked Delaware State Police, 2013 Chevrolet Tahoe was traveling northbound on Coastal Highway, (SR 1) with a green light approaching the intersection of Dartmouth Drive. A 67-year-old male, from Lewes was operating a motorized wheelchair and attempting to cross Coastal Highway from the east to the west within the cross walk. For unknown reasons, the pedestrian failed to obey the cross walk signal and crossed directly in front of the Tahoe. In attempt to try and avoid the collision, the Trooper braked suddenly and swerved to the left however, struck the left side of the motorized wheelchair within the middle of the crosswalk. After impact, the pedestrian was ejected from the wheelchair and came to rest in the middle of the northbound lane of travel.

The pedestrian was transported by ambulance to the Beebe Medical Center where he remains in stable condition. Impairment on his behalf is unknown at this time.

The Trooper who was on duty and assigned out of Troop 7,

Lewes, was wearing his seatbelt and did not sustain injuries as a result of this crash.

The Collision Reconstruction Unit is continuing their investigation into this incident. Northbound Coastal Highway in the area of Dartmouth Drive was closed for approximately 2 hours while the crash was investigated and cleared.

You can follow the Delaware State Police by clicking on:

[Delaware State Police Official Web Site](#)

[Facebook](#)

[Twitter](#)

[Nextdoor](#)

Please tell us how we're doing via our [Citizen Satisfaction Survey](#).

*Presented by Public Information Officer, Master Corporal
Melissa Jaffe*

Released: 091818 1123

-End-